

 **SIAFA**
www.siafa.com.ar

THE EDGE
INTRINSICALLY SAFE
PERSONAL NOISE DOSIMETER
MODEL EG5

USER MANUAL



The Edge Intrinsically Safe Personal Noise Dosimeter Model eg5

Warnings, Safety Markings, & Standard Information

Warnings concerning safe operation



WARNING: To prevent ignition of flammable or combustible atmospheres, no user serviceable parts inside. Repair and battery replacement must be done by authorized service personnel only.



WARNING: To reduce the risk of ignition of a flammable or explosive atmosphere, substitution of components may impair intrinsic safety.



WARNING: EdgeDock1 and EdgeDock5 are not intrinsically safe and; therefore, cannot be used in a flammable or combustible atmosphere.



Standards

- ANSI S1.25 Personal Noise Dosimeters
- IEC61252 Personal Sound Exposure Meters
- RoHS compliant
- Intrinsic safety: IEC 60079-0:2013 and IEC 60079-11:2012

Safety Markings

Manufacturer	TSI Incorporated
Equipment/model	eg5 Dosimeter
Code	Ex ia I/IIC 143°C IP65 Ambient temp. range: $-10^{\circ}\text{C} < T_{\text{amb}} < +50^{\circ}\text{C}$
(Alternate Code)	Ex ia I/IIC T4 IP65 Ambient temp. range: $-10^{\circ}\text{C} < T_{\text{amb}} < +40^{\circ}\text{C}$
Certificate number	IECEx SIM 08.0012
Maximum charge input voltage	$U_m = 5.6\text{V}$

Temperature

Operating	+14 °F to + 122 °F (-10 °C to + 50 °C) for 143°C I.S. rating. +14 °F to + 104 °F (-10 °C to + 40 °C) for T4 I.S. rating.
Storage	-13 °F to + 140 °F (-25 °C to + 60 °C).
Humidity Range	0 to 95% Non-Condensing

TSI Contact/Service Information

Should your TSI equipment need to be returned for repair or for recalibration, please contact the service department at the following number or access the online form via <http://rma.tsi.com>. For technical issues, please contact Technical Support.

Service Department and Technical Support: 1-800-680-1220 (USA) or (651) 490-2860

E-mail: technical.services@tsi.com

Internet: www.tsi.com

International Customers

Contact your local, factory-authorized distributor from whom the product was purchased. You can obtain the name and contact information of your local factory-authorized distributor from TSI Incorporated by using the e-mail or telephone information listed above.

SIRA Certification: EC Type-Examination Certificate

Equipment intended for use in Potentially Explosive Atmospheres Directive 94/9/EC

Safety Markings

Manufacturer	TSI Incorporated
Equipment/model	eg5 Dosimeter
Certificate number	Sira 09ATEX2269
Compliance with safety markings	EN 60079 – 0:2013; EN 60079-11:2012; EN60079-26:2014
Markings	I/II M1/1G Ex ia I/II C 143°C Ma/Ga (-10°C<T _a <+50°C) Ex ia I/II C T4 Ma/Ga (-10°C<T _a <+40°C)

Edge Dosimeter battery care best practices.

The Edge dosimeter incorporates a Lithium Polymer battery as a power source that with proper care should give years of operational service (three years is typical).

Proper care includes these best practices:

- After use, it is best to charge the Edge in an EdgeDock charger prior to storage for a prolonged period. A prolonged period is considered to be two or more months. If the Edge is to be stored for an even longer period, it is best to take the Edge out of storage and re-charge the dosimeter every two to three months.
- Charge the Edge in an EdgeDock before attempting to turn it on if the Edge has not been used for a prolonged period or was stored in a low battery condition.
- It is best not to store the Edge for any period of time in low battery condition.
- If not using the dosimeter it is best to keep the dosimeter in a powered up EdgeDock.

(This page intentionally left blank)

Table of Contents

Warnings, Safety Markings, & Standard Information	iii
Warnings concerning safe operation	iii
Standards	iii
Safety Markings	iii
TSI Contact/Service Information	iv
International Customers	iv
SIRA Certification: EC Type-Examination Certificate	iv
1: Introduction	1
Dosimetry	1
Overview	1
Noise Dosimeter	2
Range of Sound	3
What do the Standards Say?	3
Applications of the Edge	4
Noise Assessment Steps	5
eg5 Overview	5
Virtual Dosimeters	6
2: Getting Started	7
Checking the Equipment	7
Turning on	8
LED Indicator	9
Navigating	9
Turning off	9
Display and Keypad	10
Diagram	10
TSI Detection Management Software (DMS)	11
Loading	11
Docking Station Functionality	11
Docking Station Components	12
EdgeDock1 or EdgeDock5	12
Powering EdgeDock1 or EdgeDock5	13
Charging your Dosimeter	14
Mounting the Docking Station to a Wall	15
Storing the Dosimeter	15
3: Setting up the Edge via DMS	17
Noise Studies	17
Understanding what Data is Stored	18
Summary Data	18
Time History	18

Logging	19
Views on the Edge.....	19
Definitions of Data Log Values and Views	19
Edge Measurement Descriptors/Variants	21
Docking	22
Communicating & Downloading Data	22
Customizing Setup Parameters in DMS.....	23
Dosimeter Setting	24
General Edge Parameters	24
Setting up and Viewing C-A Measurements	26
Dose % Indicator LED.....	27
Display Setting	28
Security Setting	29
Auto Run Setting	30
Firmware Update	31
Edge: Miscellaneous Setup	32
Setting/Getting the Date Time	32
Setting/Getting the Identity	32
Saving and Sending Configurations	33
4: Running and Operating.....	35
Overview of Running a Study	35
Positioning the Edge on your Shirt	36
Checking Battery Power	37
Calibrating.....	38
Resetting the Dosimeter	39
Adjusting the Contrast on the Edge	40
Running Studies	41
Starting a Run	41
Stopping a Study	42
Indicators/Icons on the Display	42
Viewing Measurements on the Display.....	42
Locking or Securing your Dosimeter During Run	42
Locking or Securing	43
Unlocking	43
5: Viewing your Studies in DMS	45
Downloading Data.....	45
Viewing Data and Data Finder Page	47
Report View	48
Panel Layout View(charts/tables)	49
Quick Tips with Panels (charts/tables)	50
6: Technical Support/ Customer Service.....	51
Replacing Microphone and Windscreen	51
Attaching/Detaching.....	51

Hard Hat Attachment Kit	52
Contact/Service Information	53
Technical Support Contacts.....	53
Service Contact Information	53
Returning for Service	54
A: Specifications	55
Standards	55
Safety Markings	55
Mechanical Characteristics	55
Power/Electrical Characteristics	56
Environmental Effects	56
Temperature	56
User Interface	56
Display	56
Keypad.....	56
EdgeDock1 and EdgeDock5	57
Physical Attributes of EdgeDock1 and EdgeDock5.....	57
Measurements	58
Types	58
Measurement Parameters	58
Calibration.....	58
Communications	58
Special Functions.....	58
Edge Block Diagram	59
Warranty	61
B: Glossary of Terms	63
C: Measurement Equations	71

List of Figures

Figure 1-1: Sample measurement display	1
Figure 1-2: Illustration of how the dosimeter operates and processes	2
Figure 1-3: Parameter setup screen for Model eg5.....	6
Figure 2-1: Identifying your equipment	7
Figure 2-2: Powered on with measurement view displayed	8
Figure 2-3: Edge Keypad	10
Figure 2-4: EdgeDock1	11
Figure 2-5: Attaching the charger adapter with the plug adapter	12
Figure 2-6: Attaching charger adapter to EdgeDock1	13
Figure 3-1: Edge Setup and Download options in DMS	17
Figure 3-1: Sample summary data from DMS reporting	18
Figure 3-3: Sample time history data (or logged data) chart	18

Figure 3-4: Communicating—connecting a docked Edge to a PC	22
Figure 3-5: New Hardware wizard for Edge Dock	23
Figure 3-6: Dosimeter screen	24
Figure 3-7: C-A measurement setup	26
Figure 3-8: Edge display screen	28
Figure 3-9: Edge security setting	29
Figure 3-10: Edge auto run screen	30
Figure 3-11: Edge firmware update screen	31
Figure 3-12: Set/Get Date-Time screen.....	32
Figure 3-13: Set/Get Identity screen	32
Figure 3-14: Saving and sending Edge setups.....	33
Figure 4-1: Quick help list for running a study	35
Figure 4-2: Attaching the Edge on your shoulder	36
Figure 4-3: Battery indicators.....	37
Figure 4-4: Calibrating	38
Figure 4-5: Splash screen.....	39
Figure 4-6: Resetting the Edge from the keypad	39
Figure 4-7: Changing the contrast from the keypad	40
Figure 4-8: Display screen while running.....	41
Figure 4-9: Locking/Securing run.....	43
Figure 5-1: Communicating between your PC and the Edge	45
Figure 5-2: DMS start screen.....	45
Figure 5-3: Downloading in DMS with the Edge.....	46
Figure 5-4: Data Finder page with the downloaded data.....	47
Figure 5-5: Sample data report in DMS.....	48
Figure 5-6: Panel layout view (viewing the data in charts and tables).....	49
Figure 6-1: Microphone and windscreen assembly	51
Figure B-1: C-A weighting response curve	64

List of Tables

Table 2-1: LED indicators explained.....	9
Table 2-2: EdgeDock1 and EdgeDock5 components.....	12
Table 3-1: Dosimeter views and definitions	19
Table 3-2: Dosimeter measurement descriptors/variants	21
Table 3-3: Dosimeter fields explained for the Edge.....	25
Table 4-1: Indicators (i.e., run, stop, battery, and OL).....	42

1: Introduction

Dosimetry

Measuring noise in the workplace is an important element of hearing conservation programs and noise reduction programs. With a noise dosimeter, you can assess and determine a worker's daily exposure to noise levels. This information can be used to ensure compliance with regulatory bodies or to ensure if hearing conservation programs are needed.



Figure 1-1: Sample measurement display

Overview

To get you started quickly with the Edge, the first chapter is dedicated to introducing basic noise dosimetry terms and information. The subsequent chapters will guide you through setting up the dosimeter, running studies, and assessing your results with easy to follow steps and illustrations.

Noise Dosimeter

What is a noise dosimeter and how does it compute measurements?

Essentially, a noise dosimeter is composed of the following: a microphone with a preamplifier, a weighted network, fast or slow response time, an internal clock, calculator, and memory to store logged data.

The illustration below is a diagram of a basic noise dosimeter. The microphone will, when exposed to a sound pressure, generate an electrical signal. The signal will be increased by a preamplifier, and then is regulated to an applicable level by the range control (dB range). The signal then goes through a filter set or weighting system. The next circuit is the response circuit, which controls the dampening of the readout. The response choices are typically Slow or Fast. Finally, the results will display on the dosimeter screen.

For computation and storage, the clock tracks the sampling time. Dosimeters record how long sound levels exceeded a set upper limit. The calculator computes an Lavg, a dose, a TWA, and other data. The memory stores all times, calculations, and measurements.

For post-processing, DMS is used to view and analyze your measurement results with the option to view and/or print reports.

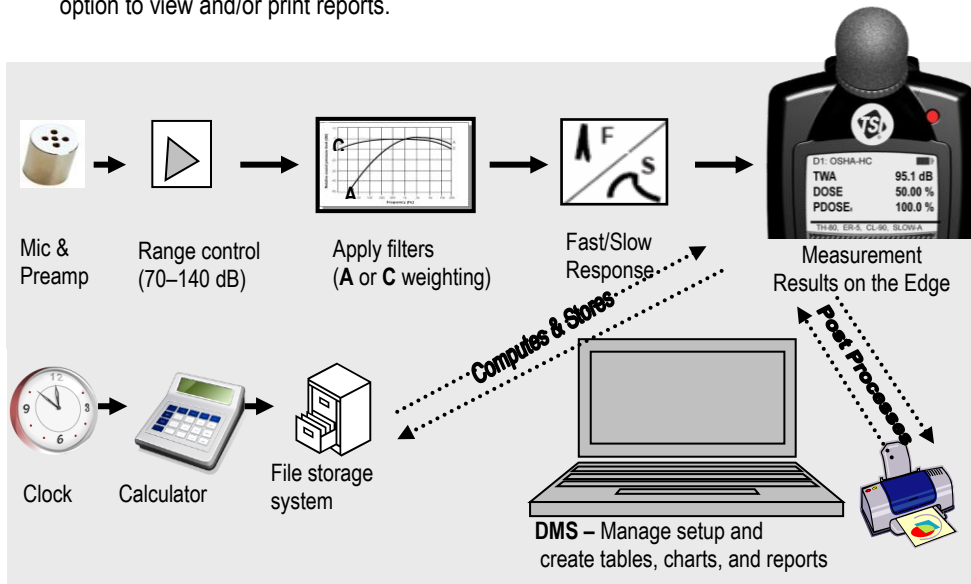


Figure 1-2: Illustration of how the dosimeter operates and processes

Range of Sound

Sound pressure is measured in decibels, or tenths of a Bel. Sound pressure level is indicated as dB SPL. Since the human ear can detect sounds with an extensive range of amplitude, a decibel scale is used to simplify the measurement results. For example, the ratio between the threshold of hearing and threshold of pain in the human ear if measured in true energy is 10,000,000 times! The same range using the dB scale is 0–140 dB referenced to 20 μ Pa (Micropascals).

The quietest sound that humans can hear has an amplitude of approximately 0 dB. Prolonged exposure to sound pressure levels exceeding 85 dB can cause permanent damage to the ear. Sound levels in excess of 130 dB are more than the human ear can safely withstand and can result in serious pain and permanent damage.

What do the Standards Say?

Many organizations have studied and analyzed the effects of high sound exposure on hearing. As a result, standards were developed to regulate personal noise exposure. In the United States, the Occupational Safety and Health Administration (OSHA), the Mine and Safety and Health Administration (MSHA), and the American Conference of Governmental Industrial Hygienists (ACGIH) have all created regulations and limitations on total permissible noise exposure. International standards are specified by the health and safety regulations such as the European Union (EU) Directive 2003/10/EC. Additionally, the International Electrotechnical Commission (IEC) IEC-61252 has specific guidelines and regulations to monitor noise in the workplace.

To access these copyrighted standards, please refer to the following:

- OSHA—<http://www.osha.gov>
- MSHA—<http://www.msha.gov>
- NIOSH—<http://www.cdc.gov/niosh/topics/noise>
- ACGIH—<http://www.acgih.org/>
- IEC—<http://www.iec.ch>

Applications of the Edge

The Edge has a cable-free, mounted microphone that converts sound pressure into an electrical signal. This signal is conditioned, monitored, and integrated over time in order to provide a host of automatically calculated values that can be used in occupational and environmental noise assessments. Programmable parameters permit the Edge to serve many applications. The Edge can be used in the following applications:



- **As a personal noise dosimeter**—used to measure a worker's daily exposure to noise levels. This information can be used to ensure compliance with OSHA, MSHA, ACGIH, IEC, or your own customized parameter settings to determine if your workers are over-exposed to noise.

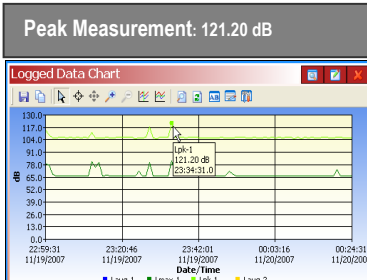


- **As a time-history monitor**—used to provide a worker's minute-by-minute noise exposure levels. This data can help you identify major contributors to the average daily noise exposure.

- **As a survey monitor**

- **Throughout a plant/facility**—used to oversee noise levels throughout an entire facility. You can identify machines and equipment which produce harmful noise levels.

- **Specific areas in a plant/facility**—used to identify key areas as “noisy” and implement noise control options. Employees may be exposed to unacceptable noise levels.



- **As a peak dosimeter**—used to detect the highest level of instantaneous sound pressure.

Noise Assessment Steps

1. Perform a task-based work flow analysis of unacceptable “noisy” areas and list regulations/codes you will follow.

- ⊙ Observe facility/areas and jot down areas of concern.
- ⊙ Check with standards and noise ordinance regulations in your region/city.
 - ❖ See [Chapter 1](#) for basic information on dosimetry and standards.



2. Setting up your dosimeter parameters for your noise studies.

- ⊙ Customize measurement setup (i.e., criterion level, threshold, weighting, exchange rate, etc.)
 - ❖ See [Chapter 2](#) for getting started with your dosimeter.
 - ❖ See [Chapter 3](#) for customizing your setup parameters.
 - ❖ See [Chapter 5](#) for Noise study scenarios.



3. Running your studies.

- ⊙ Calibrate dosimeter.
- ⊙ Attach the dosimeter.
- ⊙ Run, observe, and stop your studies.
- ⊙ Understand display indicators.
 - ❖ See [Chapter 4](#) “Running and operating”.



4. View your results via Detection Management Software (DMS).

- ⊙ Working with Charts and Tables.
- ⊙ Organizing and saving your studies.
 - ❖ See [Chapter 5](#) to view measurements with DMS.



6. Develop corrective actions.

- ⊙ Engineering: redesign tools, implement changes in workstation.
- ⊙ Administrative: job sharing/rotations, redefinition of job functions, reduce duration operating tool/equipment, and/or implement medical surveillance.

eg5 Overview

The “eg5” model is an intrinsically safe instrument featuring simultaneous **C** and **A** weighted measurements. The instrument will also calculate **C-A**. The “eg5” model features three virtual dosimeters with data logging. Once the parameters are set and saved in the dosimeter, you can monitor the three different dosimeters by pressing the **Enter** button. This will toggle the display between the three dosimeters.

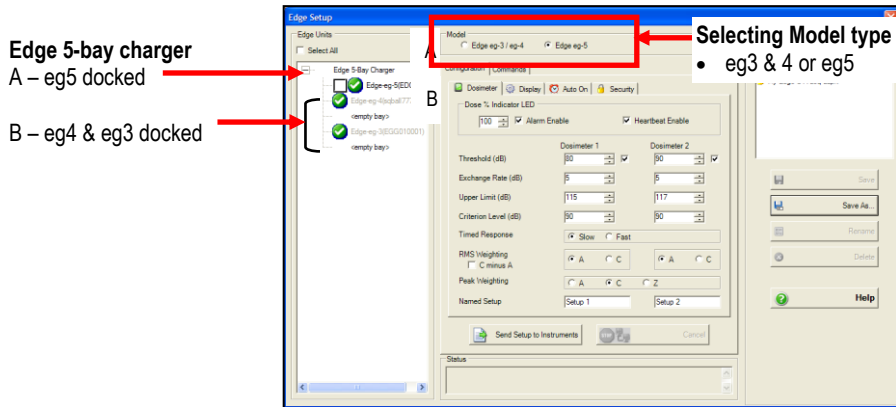


Figure 1-3: Parameter setup screen for Model eg5

NOTE on Edge 5-bay charger: If you are using a 5-bay charger, you may have various models docked at once as indicated in Figure 1-3. The models selectable in the 5-bay charger section is dependent on if you selected the eg3 / eg4 or eg5 models. DMS will display a green circle with a checkmark indicating a docked, powered on Edge with the serial name. DMS will also display a checkbox in front of applicable models that are selectable for communicating setup parameters, downloading data, and performing miscellaneous setup. (See “[Customizing setup parameters](#)” for more details.)

Virtual Dosimeters

You can monitor and log noise studies by enabling three different parameter settings in one instrument, also referred to as “virtual dosimeters”. For instance, you may want to set one dosimeter to log using the OSHA HC (Occupational Safety and Health Administration – Hearing Conversation) parameters and also monitor noise with the OSHA PEL (Occupational Safety and Health Administration – Permissible Exposure Level) settings.

A few scenarios of virtual dosimeters include:

- Industrial noise control, hearing conservation compliance, work site assessments, personal noise verification, and military applications.

2: Getting Started

This chapter is designed to guide you through basic information you will need to begin logging your studies.

Checking the Equipment

If your instrument was sent to you in a storage case, remove all the packaging and become acquainted with the following equipment so you can quickly get started with your noise studies.

NOTE: Depending on the accessories you selected, the dosimeter may have the following components. For the docking stations, you will either have an EdgeDock1 or an EdgeDock5. (For more information on parts/accessories, please refer to www.tsi.com.)

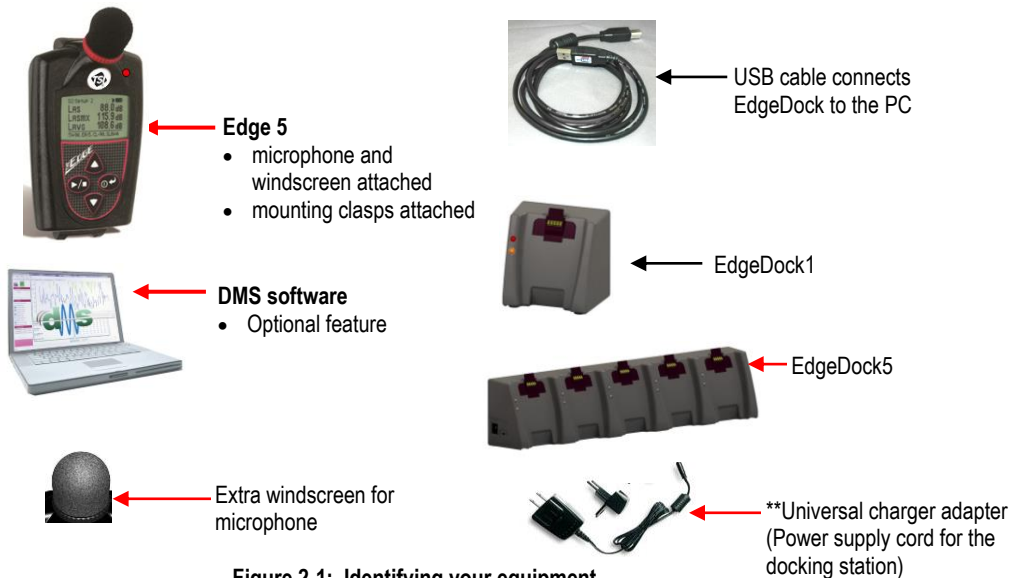



Figure 2-1: Identifying your equipment

Turning on

1. To turn on the Edge, press the on/off and enter  button.
- The Edge **splash screen** (see Figure 2-3 for an example, page 10) will appear indicating the model (i.e. "eg5") and firmware version. The screen will be in the **measurement view**.

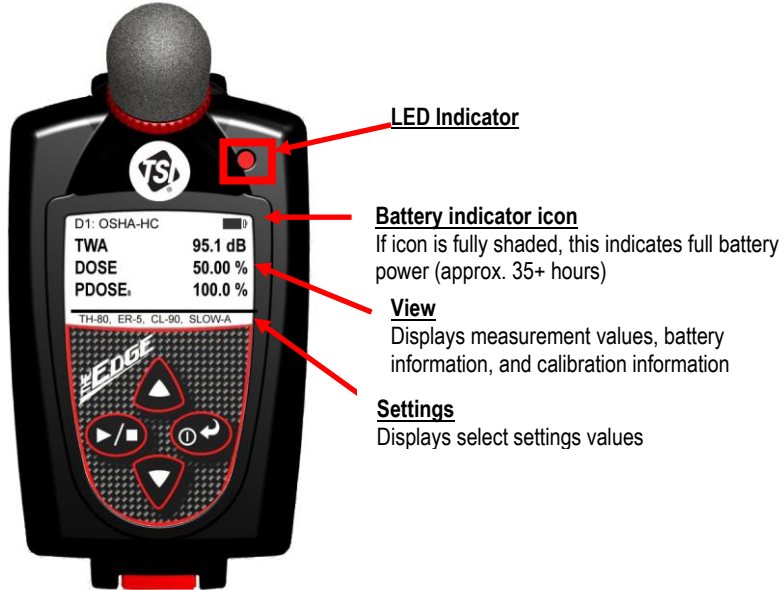


Figure 2-2: Powered on with measurement view displayed

LED Indicator

There is a three-color LED indicator on the Edge, located to the right of the TSI logo.

Table 2-1 explains when and why the LED indicator color will appear.

NOTE: The LED indicator can be disabled via DMS (see "[Chapter 3, "Setting up the Edge via DMS"](#)".)




LED indicator	Explanation
 Red	A flashing red LED indicates the dosimeter 1 dose has exceeded the alarm level.
 Amber	A flashing amber LED indicates the dosimeter is stopped and has not exceeded the dosimeter 1 dose alarm level.
 Green	A flashing green LED indicates the dosimeter is running and has not exceeded the dosimeter 1 dose alarm level.

Table 2-1: LED indicators explained

Navigating

Once the dosimeter is "Powered-On," press the **up/down ▲/▼** arrows to navigate through the measurement values and battery run time.

Turning off

1. Press and hold the **on/off and enter**  button.
 - A "3, 2, and 1" countdown will appear as the dosimeter is powered off.

NOTE: To halt the power off mode, simply release the **on/off enter** button.

Display and Keypad

The keypad is used to run and stop your studies, view your measurement values, and power on and off the dosimeter.

Diagram

The following diagram explains the features on the display and keypad.

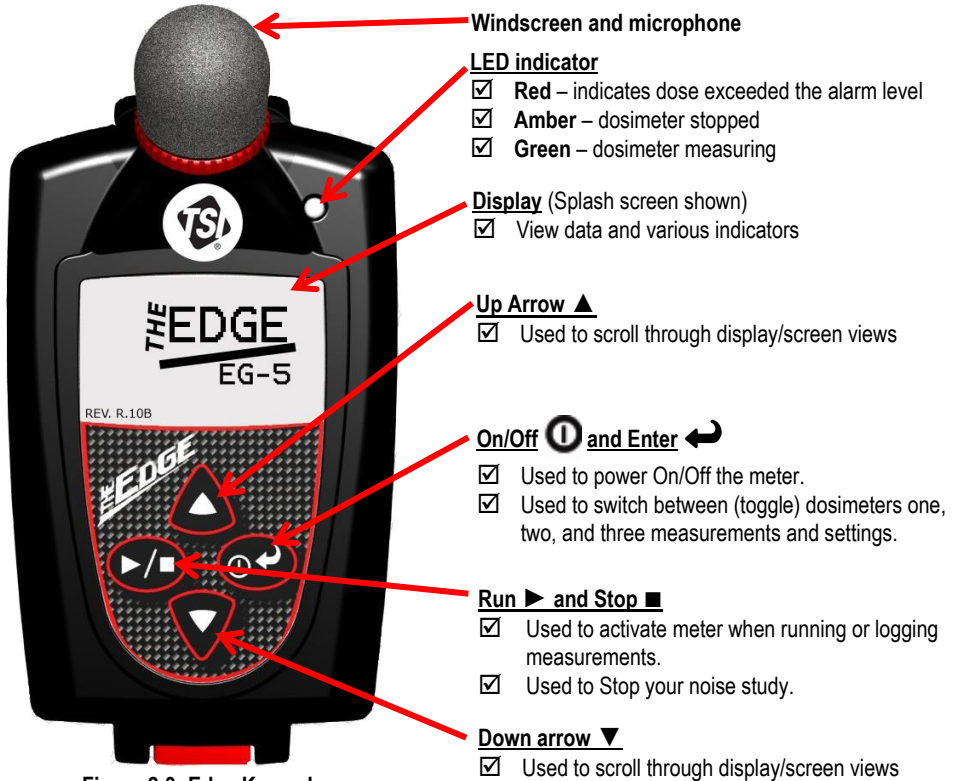


Figure 2-3: Edge Keypad

TSI Detection Management Software (DMS)

TSI Detection Management Software (DMS) is a software application designed by TSI that runs under the Windows operating system. You can use DMS for a variety of functions related to the Edge dosimeter and with many other TSI instruments. DMS has the ability to customize your setup parameters, display data, manipulate data, and create reports. For additional information, access the online help manual by clicking on **Help | Content**.

Loading

To load DMS software, follow the Quick Start Guide instructions or download from www.tsi.com.

The software will automatically load the drivers for the EdgeDock1 and/or EdgeDock5. If loading from TSI Internet site, follow the directions online at www.tsi.com.

Docking Station Functionality

Depending on the kit you purchased, you may have an EdgeDock1 and/or an EdgeDock5. Both are designed similarly with the same LED indicators. The main difference with the EdgeDock5 is that it has five bays for docking, charging, and/or managing the dosimeters. If desired, the EdgeDock5 will charge all docked instruments at one time.

The docking station serves a **dual-purpose role**. (See Table 2-2 for an explanation of LEDs and components.)

1. It is used to charge the battery on the dosimeter(s).
2. It is used to communicate between the software (DMS) and the dosimeter (i.e., import, export settings and measurement files).

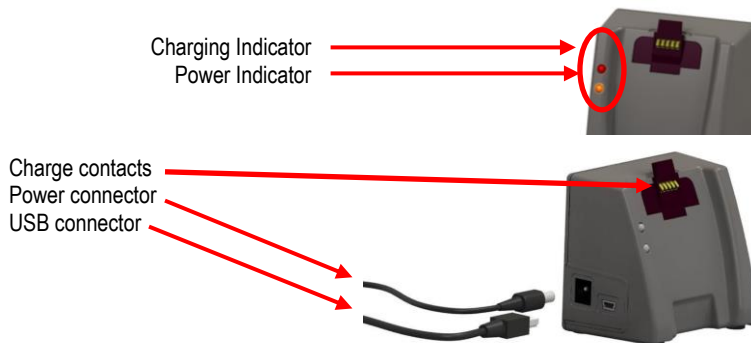


Figure 2-4: EdgeDock1

Docking Station Components

The table below explains the EdgeDock1 or EdgeDock5 LED indicators, power connector, USB connector, and contact pins.

Docking station components	Explanation
Charging indicator	Identifies if the dosimeter is “charging” or “fully charged”. A red blinking LED indicates the dosimeter is charging. A solid green LED equates to a fully-charged dosimeter.
Power indicator	An amber LED indicates the docking station is powered on.
Power connector	Attach the power connector cable to the docking station in order to charge the dosimeter(s).
USB connector	Attach the USB connector to communicate with the dosimeter(s).
Charge Contacts	Placing the dosimeter(s) onto the charge contacts allows charging and communication.

Table 2-2: EdgeDock1 and EdgeDock5 components

EdgeDock1 or EdgeDock5

The EdgeDock1 and EdgeDock5 are powered by a 12-volt charger adapter.

Figure 2-5 illustrates the assembly of the charger adapter and the plug adapter. It slides into place by guiding it down the back cavity (opening) of the power supply.

NOTE: The example is a typical adapter which may be different than the one you are using. Mechanically, it will function similarly.

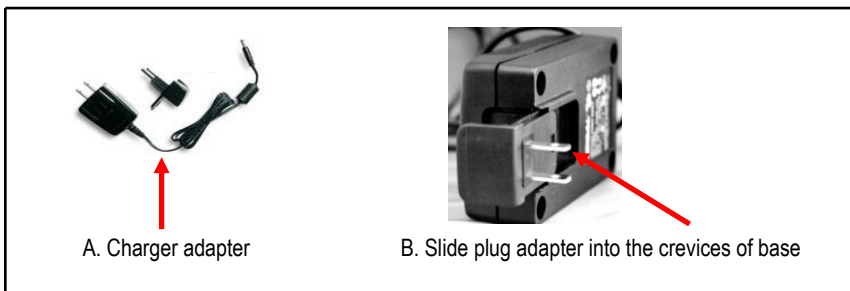


Figure 2-5: Attaching the charger adapter with the plug adapter

Powering EdgeDock1 or EdgeDock5

➤ Powering EdgeDock1 or EdgeDock5

1. Assemble the charger adapter and plug adapter as illustrated in Figure 2-5. (It will be the same process for an EdgeDock5.)
2. Plug the charger adapter directly into the wall (electrical wall plate).
3. Plug the opposite end into the power connector (or jack) of the EdgeDock1.

NOTE: An amber, solid light will appear indicating power to the charger.



Figure 2-6: Attaching charger adapter to EdgeDock1

Charging your Dosimeter

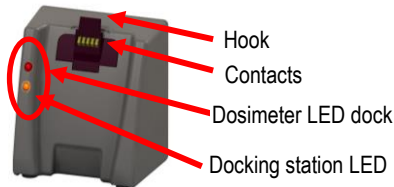
The number of hours you have used your dosimeter from your last charge will impact your total charge time. For example, if the battery clock indicator (see "[Checking battery power](#)" for more information) displays 20 hours remaining on the battery and you want to charge the battery, the approximate charging time is 2 hours.

NOTE: To charge a fully discharged battery, it would take approximately 3 to 3.5 hours.

➤ How to charge

1. Plug in the power adapter to the EdgeDock. (See power adapter below.)

The EdgeDock's lower LED will appear solid when powered on.



2. Slide the Edge (see 1) downward onto the **Hook** of the EdgeDock until it clicks. It will be fully seated. (See 2 in Figure below).

NOTE: The top LED will appear as red flashing or solid green when fully charged.



1. Backside of Edge:

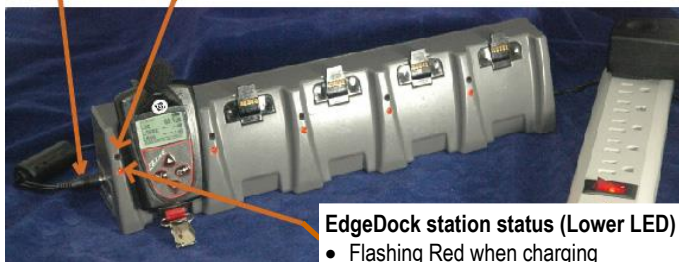
The open cavity & contacts slides into the "Hook" of EdgeDock. The contacts will align to each other.

2. Example of the Edge Charging

Dosimeter Charge status' (Upper LED):

- **Flashing Red** LED when charging
- **Solid Green** LED when fully charged

Power adapter



EdgeDock station status (Lower LED)

- **Flashing Red** when charging
- **Solid Green** LED when fully charged.
- **Amber** LED indicates dock is powered on but Edge is not docked.

Figure 2-7: Docking the Edge on the EdgeDock

Mounting the Docking Station to a Wall

The docking station is equipped with two single screw slots in case you want to mount the docking station to the wall. The figure below displays the backside of the single bay dock.

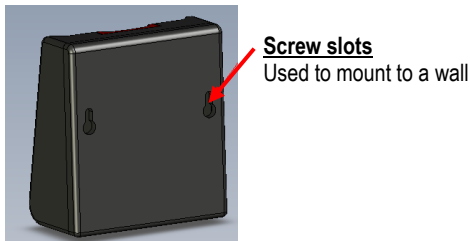


Figure 2-8: Backside of EdgeDock1

Storing the Dosimeter

To preserve the life of the battery, turn the dosimeter off when you are storing the dosimeter.



Additionally, if the dosimeter is docked and stored on the docking station when it is powered off, it will still draw a small amount of battery power from the dosimeter. Thus, it is recommended to store the dosimeter(s) separately from the docking station.

(This page intentionally left blank)

3: Setting up the Edge via DMS

Noise Studies

The eg5 model comes equipped with three customizable user setups. You have the option to customize the parameters for threshold values, exchange rate values, filtering, C-A measuring, an upper limit value, and a criterion level.

This chapter explains data storage, the preset views on the dosimeter, and how to customize the parameters and display of your Edge via DMS. It concludes with an explanation of downloading data from the dosimeter to the software.  

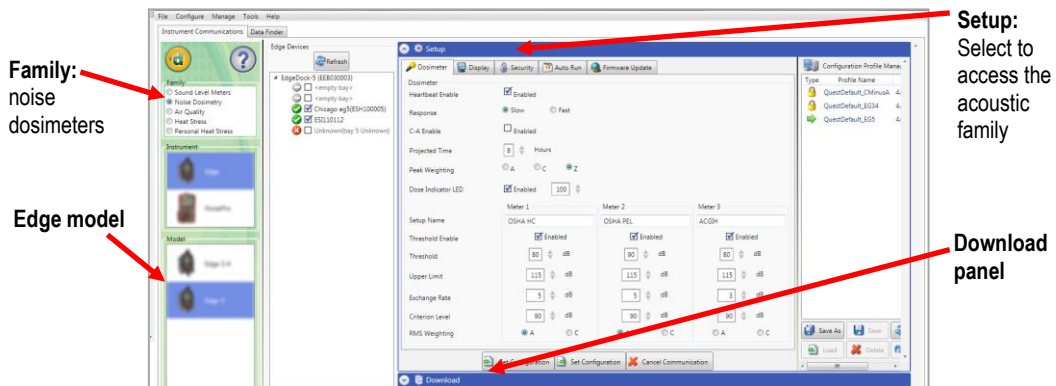


Figure 3-2: Edge Setup and Download options in DMS

Understanding what Data is Stored

When you are running noise dosimetry studies, there are two types of data stored on the dosimeter which include the summary data and time history (or Logged) data.

Summary Data

Summary data represents values that occurred over the entire run of the study. For an average value, such as Lavg, it represents the average decibel value over the entire run time. Peak and Max values are the highest measurements that occurred throughout the run time.

NOTE: To view C-A measurement results, this is a selectable parameter from the edit panel icon. Please see Setting up and Viewing C-A measurements.



Description	Meter/Sensor	Value
Lasmn	1	59.7 dB
Lasmx	1	105 dB
Lavg	1	99.8 dB
Lcpk	1	122.1 dB
Mintime	1	1/18/2011 5:24:11 PM
Mxtime	1	1/18/2011 10:33:10 PM
OL%	1	0 %
Pdose	1	390.1 %
PKtime	1	1/18/2011 11:51:02 PM
Projected TWA	1	99.8 dB
Rtime	1	08:00:00
SEL	1	173.8 dB
TWA	1	99.8 dB
UR%	1	0 %

Figure 3-3: Sample summary data from DMS reporting

Time History

Time history data is also referred to as “logged data” which plots measurement values in minute by minute intervals.

Time History data represents values that occurred over the most recent time period, which is the logging interval. For example, if the log interval is 1 minute, then the Peak value is the highest Peak value for that 1 minute, and the Lavg value is the average dB value for that 1 minute.

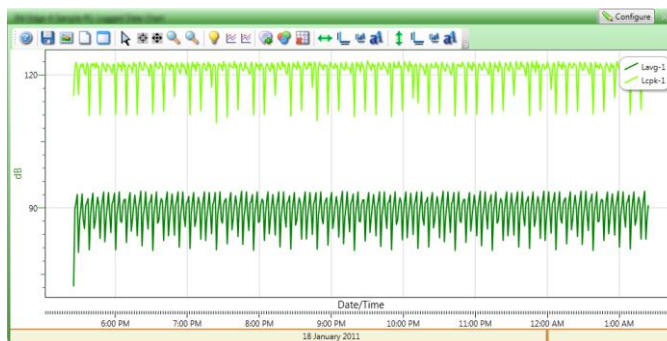


Figure 3-4: Sample time history data (or logged data) chart

Logging

The eg5 model only logs at one minute intervals and includes the following measurements:

- Meter 1 logs Lavg/Leq
- Meter 2 logs Lavg/Leq
- Meter 3 logs Lavg/Leq
- Lc-a (if enabled)
- Lcpk and Lmax

If the dosimeter runs for one hour, then it will log 60 Lavg/Leq results, and 60 Lmax/Lcpk levels. In DMS, you can customize the logged data chart results by checking Lavg/Leq, Lcpk, and/or Lmax measurement values.

Views on the Edge

The Edge is a user-friendly and customizable dosimeter. With a simple click of a checkbox in DMS, you can select the appropriate measurement values or views to appear or not appear on the display of your dosimeter. The following table briefly identifies the displayed data values and views with a brief definition. (See the [glossary](#) for additional information of these terms.)

Definitions of Data Log Values and Views

To set up the Edge and work with noise level data, you will want to have a good understanding of the terms listed in Table 3-1.

NOTE: The following table is based on **A**-weighted, slow measurements. Thus, if you choose **A** or **C**-weighted with Fast or Slow response the measurement values will change on the display (i.e., you selected sound pressure level with **C**-weighting with Fast response, it will display as Lcf.) For further details, please see Table 3-2.

Views on the EDGE	Explanation
L _{AS}	Sound pressure level —is the basic measure of noise loudness, expressed in decibels. (In DMS this is noted as “SPL”)
L _{ASMX}	Maximum sound level —is the highest sound level recorded during a measurement interval with a particular response setting (Slow or Fast) and weighting (A or C). Lmax is the highest value that is included in Lavg or dose calculations. <ul style="list-style-type: none"> • Under OSHA regulations, unprotected workers may not be exposed to maximum sound levels greater than 115 dB, measured with a Slow response rate.
L _{cpk}	Peak Level —is the highest instantaneous sound pressure level recorded during a measurement interval. Unlike the maximum level, the peak is detected independently of dosimeter settings for response rate or weighting. <ul style="list-style-type: none"> • Under OSHA regulations, unprotected workers may not be exposed to peak sound levels greater than 140 dB.
L _{ASMN}	Minimum sound level —the lowest sampled sound level during the measurement interval allowing for the unit’s Response Time setting (Fast or Slow).
L _{avg}	Average sound level —(in dB) computed for a chosen time duration, based on a 4, 5, or 6 dB exchange rate. Lavg with a 3 dB exchange rate is referred to as Leq (equivalent sound level). All sound levels at or above the threshold level are averaged into the calculations relating to noise exposure. Lavg is typically calculated with no threshold, with a threshold of 80 dB or with a threshold of 90 dB.

Table 3-1: Dosimeter views and definitions

Views on the Edge	Explanation
L _{TWA}	<p>Time-weighted average—is the sound level (in dB) that is accumulated for any time period but with its average level computed over an 8-hour period. TWA is usually measured with A-weighting, Slow response, and a 5 dB exchange rate.</p> <ul style="list-style-type: none"> • All sound levels at or above the threshold level (cutoff level) are averaged into the calculations relating to noise exposure. TWA is calculated with no cutoff, with cutoff 1 (typically 80 dB), or with cutoff 2 (typically 90 dB). • If the time period is less than 8 hours, the TWA will be less than the L_{avg}. If the time period is more than 8 hours, the TWA will be more than the L_{avg}.
L _{AE}	<p>Sound Exposure Level (SEL)—the sound exposure level averages the sampled sound over a one second period. Assuming the sampled run time to be greater than one second, SEL is the equivalent one-second noise that would be equal in energy to the noise that was sampled. SEL is typically measured using a 3 dB exchange rate without a threshold. (L_{AE} is not used by OSHA.)</p>
Dose	<p>Dose—related to the Criterion Level, a dose reading of 100% is the maximum allowable exposure to accumulated noise. For OSHA, 100% dose occurs for an average sound level of 90 dB over an 8-hour period (or any equivalent exposure). (Please see Glossary of Terms for more details).</p>
Projected Dose (P _{dose})	<p>Projected Dose—this is similar to Dose. However, instead of an 8-hour period, a specific hour is entered. (See dose for more information.)z</p>
UL	<p>Upper Limit—is the amount of time that the sound level exceeds a preset level (the Upper Limit).</p>
L _{C-AVG}	<p>It is the result of subtracting an A-weighted L_{avg} from a simultaneously collected C-weighted L_{avg}. This value is used to determine the following equation:</p> <ul style="list-style-type: none"> • Estimated Exposure (dBA) = Workplace Noise Level (dBA) – (NRR- L_{C-AVG})
Time Response (Fast, Slow)	<p>Typically, noise is not constant. Using a response of Slow or Fast simply smooths the noise fluctuation and makes the sound level easier to work with.</p> <ul style="list-style-type: none"> • Slow – 1 second (1,000 milliseconds) • Fast – 0.125 second (125 milliseconds)
RT	<p>Run Time - The overall time of your noise study.</p>
Weighting (A, C)	<p>A and C weighting are types of frequency filters that cover the frequency range of human hearing (20 Hz to 20 kHz).</p> <ul style="list-style-type: none"> • “A” weighting—the “A” weighted filter attempts to make the dosimeter respond closer to the way the human ear hears. It attenuates the frequencies below several hundred hertz as well as the high frequencies above six thousand hertz. “A” weighted measurements are often reported as dBA. • “C” weighting—provides a fairly flat frequency response with only slight attenuation of the very high and very low frequencies. “C” weighting is intended to represent how the ear perceives sound at high decibel levels and is often used as a “flat” response when LINEAR is not available. “C” weighted measurements are often reported as dBC.

Table 3-1: Dosimeter parameters and definitions (continued)




Views on the Edge	Explanation
	<p>Memory storage symbol—</p> <ul style="list-style-type: none"> eg5—the eg5 model displays the total memory storage remaining in hours and minutes. For example, if it displays the memory symbol 100:50 this represents 100 hours and 50 minutes of memory storage remaining on the dosimeter.
	<p>Calendar symbol—the calendar symbol and calendar field displays the day-month-year.</p>
	<p>Battery power clock symbol—the battery power clock symbol identifies the number of hours and minutes of battery time remaining on the dosimeter. (NOTE: Refer to page iii to view battery care and best practices.)</p>

Table 3-1: Dosimeter parameters and definitions (continued)

Edge Measurement Descriptors/Variants

The following is an explanation of the Edge descriptors and equivalents for Lmax, Lmin, and Lcpk.

Descriptors	Variants
L _{ASMX}	<p>Maximum sound level—is the highest sound level recorded during a measurement interval with a particular response setting (Slow or Fast) and weighting (A or C). Lmax is the highest value that is included in Lavg or dose calculations.</p> <ul style="list-style-type: none"> Under OSHA regulations, unprotected workers may not be exposed to maximum sound levels greater than 115 dB, measured with a Slow response rate.
L _{APK}	<p>Peak Level—is the highest instantaneous sound pressure level recorded during a measurement interval. Unlike the maximum level, the peak is detected independently of dosimeter settings for response rate or weighting.</p> <ul style="list-style-type: none"> Under OSHA regulations, unprotected workers may not be exposed to peak sound levels greater than 140 dB.
L _{ASMN}	<p>Minimum sound level—the lowest sampled sound level during the measurement interval allowing for the unit's Response Time setting (Fast or Slow).</p>

Table 3-2: Dosimeter measurement descriptors/variants

Docking

Communicating & Downloading Data

By using your docking station, USB cable, software, and your dosimeter, you can quickly communicate between the software and the dosimeter. There are two methods for communicating which are:

- **Send setup data:** Enables you to configure your setup parameters in Detection Management Software (DMS) and download these parameters to the Edge.
- **Retrieve data:** You have the capability to retrieve the data from the dosimeter into DMS in order to view and analyze your studies in DMS's charts, tables, and reporting functionality.

➤ **How to connect your dosimeter to the computer**

1. Dock the dosimeter on the EdgeDock1 (or 5) and turn on the dosimeter by pressing the **on/off Enter** button.

NOTE: See charging your dosimeter for more information.

2. Plug the USB cable into the computer. (See “A” in Figure 3-4).
3. Plug the opposite end into the docking station (See “B” and “C”).

NOTE: The docking station will be powered through the computer; thus, you do not need to plug in the charger adapter. If you want to charge the dosimeter, plug in the charger adapter.

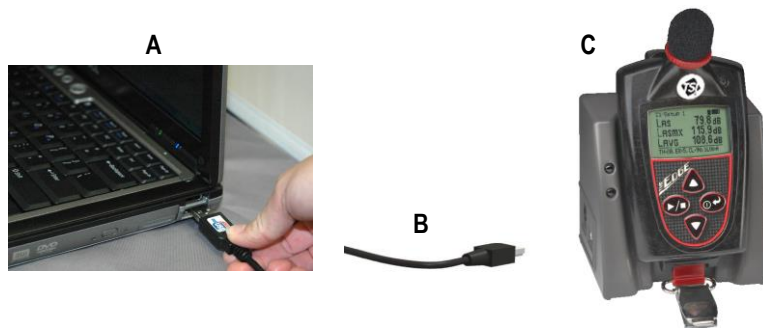


Figure 3-5: Communicating—connecting a docked Edge to a PC

4. For first time use of a docking station, **Welcome to the found new hardware wizard** will appear (see Figure 3-5). Select **No** and press **Next** through the remaining wizard. At the end of the wizard, press **Finish**.
 - **This will install the hardware components associated with your EdgeDock1 and/or EdgeDock5.**

NOTE: If you have more than one EdgeDock1 or EdgeDock5, this wizard will appear for each new dock which is connected to your PC.



Figure 3-6: New Hardware wizard for Edge Dock



Customizing Setup Parameters in DMS

Customizing and saving setups are performed via DMS. The following sections discuss each of the setup screens and explain how to save and send the parameters to the dosimeter(s).

NOTE: The following DMS settings apply to the eg5 model. If you are also using other models (eg3/eg4) and have them docked in a 5-bay charger, they will appear in the “Edge Bay Charger” tree section, but will not be selectable unless you first select the eg3/eg4 models radio button. Use the checkbox to denote which instruments are affected when setup changes are applied and the “send setup to instruments” or “set identity” buttons are selected.

Dosimeter Setting

The Edge general settings are used to set up the instrument with basic parameters. The eg5 model features three dosimeters in one with three customized, user-defined settings. Please refer to the General Edge parameters table below for details. With the Edge 5, you have the option of setting up three virtual dosimeters.

- Click on the Dosimeter tab from the Edge's Instrument Configuration panel (see **1**). To change the general settings, follow one (or all) of the selection options below.
 - Click on the arrow  and select an option.
 - Click on the  arrows and select a numeric value or type in a value.
 - Click in the print settings checkbox to activate/enable the print settings feature.
- To set the general features, save and send to the Edge (for more details see ["Saving and Sending Configurations"](#)).

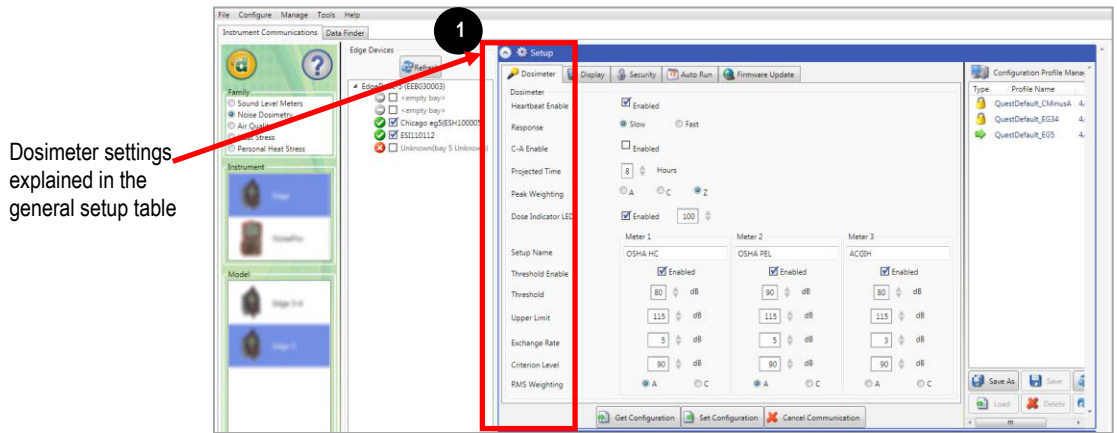


Figure 3-7: Dosimeter screen

General Edge Parameters

Dosimeter Setting	Description
	*NOTE: refer to Glossary for more detailed information.
Heartbeat enable	When enabled (or checked), the LED will flash green while running and flash amber when stopped.
Response	Either Slow Time Response or Fast Time Response is applied to the measurements. (Typically Slow time response is used in the US market while Fast is used in the EU communities.)
C-A enable	When enabled (or checked), C minus A will be calculated.

Dosimeter Setting	Description *NOTE: refer to Glossary for more detailed information.
Projected Time	A selectable time parameter via the up/down arrows or type in a value. The projected time value is used to make projected dose calculation for the dose measurement.
Peak Weighting	Select either A, C or Z for the peak frequency weighting.
Dose % Indicator LED (Dosimeter 1)	When enabled (or checked), the LED will flash red when the dosimeter 1 dose % value exceeds the designated entered value.
Setup name	(Optional field) A setup name may be entered into the Meter 1 and/or Meter 2 fields. When set, it appears on the top of Edge's display (example setup names: OSHA, MSHA, EU directive).
Threshold enable	When the checkbox is selected and a value is entered for meter 1 and/or meter 2 only values above the thresholds are used to calculate Lavg, TWA, and Dose measurements.
Upper Limit	Select a UL dB level by the up/down arrows or by typing in a value. NOTE: The upper limit (UL) is a measurement setting in which the user selects a specific decibel level. The UL value records the amount of time that the Sound level is at or greater than the entered level.
RMS Weighting	Select either A or C RMS Weighting. NOTE: The RMS (root mean square) are the results from the Edge with the response time and weighting settings taken into account.
Criterion Level	Select a Criterion level via the up/down arrow or by typing in a value. NOTE: Criterion level is the average SPL that will result in 100% dose over the criterion time and is typically set by a regulatory agency such as OSHA, EU directive, etc.
Exchange Rate	Enter in (or select with up/down arrows) 3, 4, or 5 dB. ER refers to how sound energy is averaged over time. (OSHA uses a 5 dB doubling rate while most of the world uses 3 dB.)

Table 3-3: Dosimeter fields explained for the Edge

Setting up and Viewing C-A Measurements

With the eg5 model, you have the option of enabling C-A measurement and viewing the values in tables and charts (also called “panels”).

For your setup parameters, C-A is selected via the Setup button of DMS’s dosimeter screen. A quick checkmark of **C minus A** activates this measurement and is viewable on the display if it is turned on in the Display screen (refer to [“Noise dosimeter”](#) or [“Customizing setup parameters in DMS”](#) for more information.) Your setup parameters should look similar to the figure below.

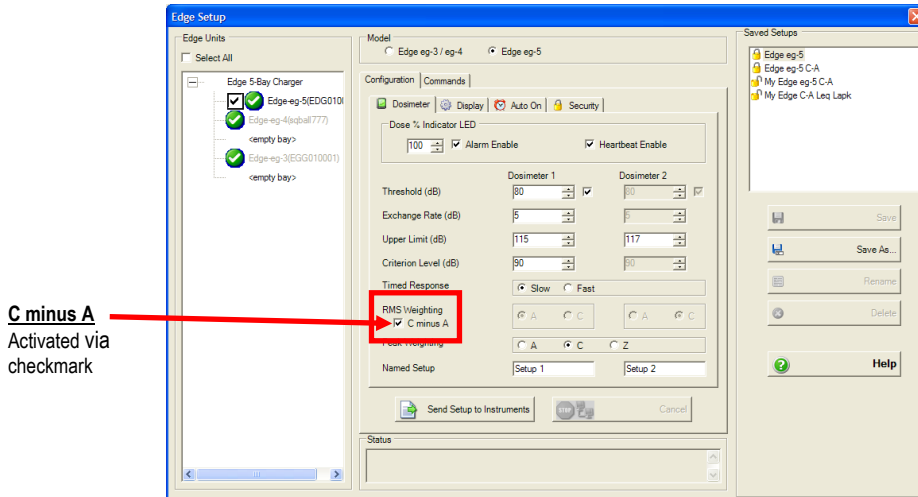


Figure 3-8: C-A measurement setup

Dose % Indicator LED

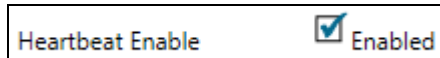
The Edge is equipped with a multifunction LED indicator located to the right of the TSI logo. Aside from its communication-related functions while in the dock station, it can be used as a Heartbeat to indicate the dosimeter run state. In addition, while the dosimeter is running, it can also be used to provide an alarm for when the user's dose % has exceeded a designated value (as measured by dosimeter 1). Some users may prefer to disable one or both of these LED functions.

To configure the Indicator LED, begin by opening DMS, select setup button from start screen, and then select **Edge** and the appropriate model (ensuring it is set up to communicate).

- **Alarm enable:** To enable the flashing red LED when the dosimeter 1 dose % exceeds the designated value during run mode, select (check) the **Enabled** checkbox. Then use the arrows to select a numeric value or type in a value for the dose % alarm level. To disable this feature, clear the **Enabled** checkbox.



- **Heartbeat enable:** To enable the flashing green LED when the dosimeter is in run mode, select (check) the **Enabled** checkbox. To disable this feature, clear the **Enabled** checkbox.



Press **Set Configuration** to send the changes to the selected instrument.

Display Setting

The display screen is used to customize the parameters which will appear on your Edge. It is organized by two columns, the “Display position” and the “Item to Display” and includes a “Set selected Items” selection/drop down box. The display position indicates the order of the parameter (or item) which will appear on the display, while the “Item to display” designates the measurement or parameter. The example/figure below displays the SPL, Max, Min, Lavg, TWA, Dose, UL, RT, and battery time remaining parameters to appear on the display.

NOTE: There are up to 18 selectable parameters.

1. Click on the **Display** tab from the Edge’s Instrument Configuration panel (see **1**). To customize the display, click on either the **Display position** (see **1**) or the **Item to Display** field (see **2**). The field will be shaded in blue when selected.
2. Click on the drop down box of the **Set Selected Item** (see **3**) and select a parameter.
3. Repeat these steps as needed to select each position.

NOTE: “OFF” indicates that no item/parameter is selected.

4. To set the display features, save and send to the Edge (for more details see “[Saving and Sending Configurations](#)”).

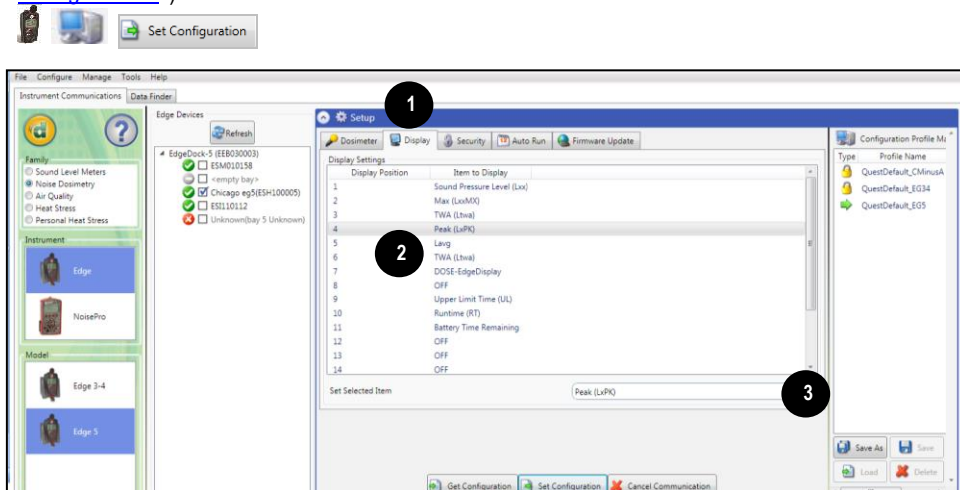


Figure 3-9: Edge display screen

Security Setting

The security setting is a type of “locking” feature (or secure run feature) that enables you to password protect the instrument to prevent users from inadvertently terminating a study. Initially, this feature is set through the software and turned on once in run mode by pressing run/stop key three consecutive times. (To unlock, press run/stop key three consecutive times and then press power key.) To set this feature, please follow the steps below.

1. Click on the **Security** tab from the Edge’s Instrument Configuration panel (see **1**). To enable, click on the **Enabled** check box. (Ensure the specific Edge is selected and communicating to the software. See “*Communication Setup*” for more information.)
2. Next, select either **Not Displayed** (see **2**) or **Displayed** (see **3**). Press **Set Configuration** to send the changes to the selected instrument.
3. To set the security settings, save and send to the Edge (for more details see “[Saving and Sending Configurations](#)”).

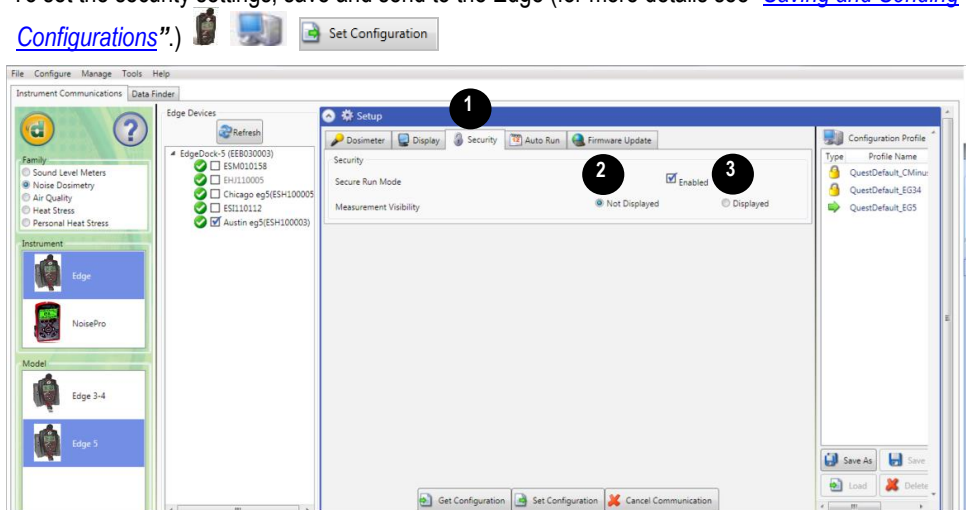


Figure 3-10: Edge security setting

Auto Run Setting

With the Edge auto-run mode, you can program up to two *auto start* and *auto stop* configurations when start date and duration parameters are enabled. This is useful if you want to pre-set the instruments to run and stop for a specific time period, such as a week-long study. See steps below to enable.

1. Click on the **Auto-Run** tab from the Edge's Instrument Communications panel (see **1**) and click in the **Enable** checkbox (see **2**).
2. To program **Date 1**, click in the **Enabled** checkbox and select a **Start Date** (by using the calendar icon or type in a date). Select the **Duration**, by either typing in the time (designated in hours, minutes, and seconds) or using the up/down arrows (see **4**). (Repeat this step to set up a second Auto run mode. See **5**.)
3. To set **Auto-Run** setting, save and send to the Edge (for more details see "[Saving and Sending Configurations](#)").

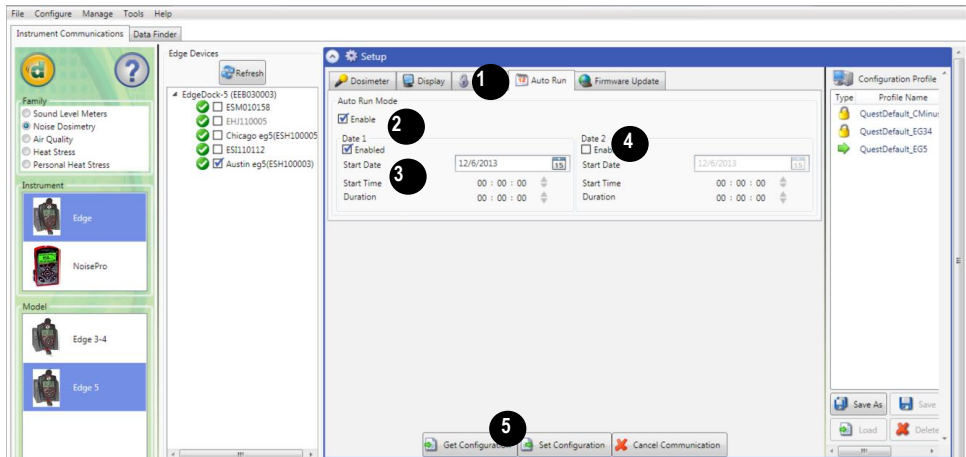



Figure 3-11: Edge auto run screen


Firmware Update

Edge firmware updates are performed in DMS when the instruments are docked, communicating, and the update key is selected. Please follow the steps below prior to updating your Edge(s).

NOTE: This feature enables you to update all of your docked Edges (when powered on and not in run mode).

1. Click on the **Firmware** tab from the Instrument Communications panel (see **1**) and ensure to dock the Edge (or Edges). Please read steps under “Firmware Update” prior to updating (see **2**).

- Press  button to refresh the docked instruments (if necessary).

2. Press the  button and please wait until the software states that it is **Done**. (Example of the

message: ).

3. To set, save and send to the Edge (for more details see [“Saving and Sending Configurations”](#)).

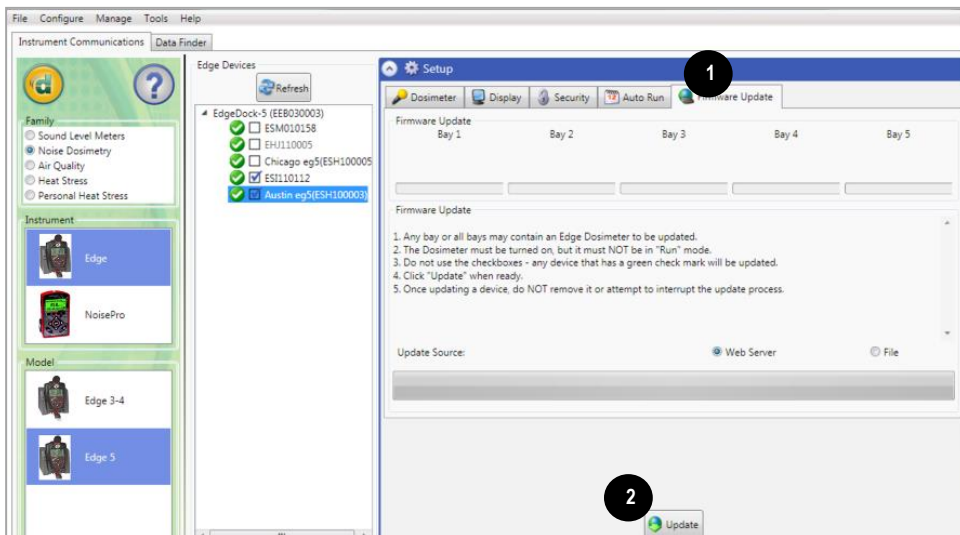



Figure 3-12: Edge firmware update screen



Edge: Miscellaneous Setup

The Edge miscellaneous setup screens can be used to set/get the Date Time of the instrument and set/get its identity string.

Setting/Getting the Date Time

Set the date time of the instrument on the **Date-Time** tab of the **Miscellaneous setup** screen. Choose either the **Current System Time** or **Specific Time** radio button. For **Specific Time**, enter the date using the calendar or manual entry. Set the time with the  arrows and select a numeric value or type in a value. Send the date time to the instrument by clicking the **Set Date Time** button. You can retrieve the instrument's current time value by clicking the **Get Date Time** button.

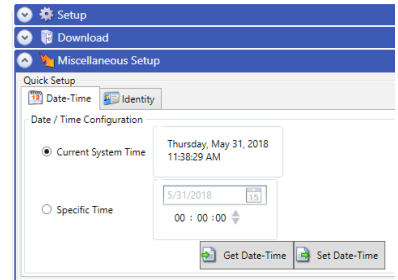


Figure 3-13: Set/Get Date-Time screen

Setting/Getting the Identity

Set the identity string of the instrument on the **Identity** tab of the **Miscellaneous setup** screen. Enter an identity value in the **Identity string** text box. Send the identity to the instrument by clicking the **Set Identity** button. You can retrieve the instrument's current identity value by clicking the **Get Identity** button.

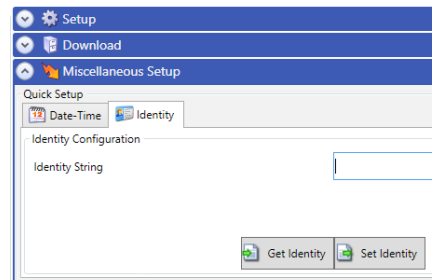


Figure 3-14: Set/Get Identity screen


Saving and Sending Configurations

With the Edge, there are saved setup profiles used to quickly access and apply to The Edge(s). The steps below explain how to save the configuration settings in DMS and how to send to the instrument. There is also a Get Configuration feature which is used to pull the setup from the instrument into the software.

NOTE: If you want to only send the setup or get the setup, skip to step 3 or 4. Please refer to this section as you set up your instrument.


1. To save the Edge configuration in the software, click on a name in the **Configuration Profile Management** panel (See **1**).

NOTE: The name will be shaded a light gray when selected.


- To create a new profile name, click  and type in a profile name. Click **Save**. (It will save under the configuration profile management panel).

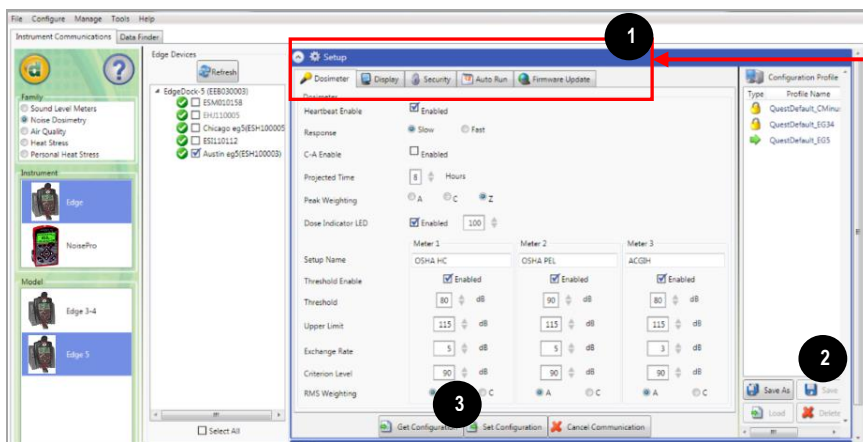
2. Click on the  button (see **2**) and type in a **Name**. Click **OK**.

NOTE: This saves the configuration file in the software.

- Or click  button and rename the setting by typing in a name. Click **OK**.

3. To send to the instrument, select the  button (see **3**).

4. To get the setup from the instrument, click on the  button (*Optional:* To save the setup as a configuration follow steps 1–2 above.)



Setups:
Click on the tabs to set up/view:

- Dosimeter, Display, Security, Auto-Run, and Firmware Update

Figure 3-15: Saving and sending Edge setups

(This page intentionally left blank)

4: Running and Operating

As explained in Chapter 3, the view of your display is customizable via DMS.

NOTE: The subsequent sections show examples of views which you may have disabled on your dosimeter. (Please refer to Chapter 3, "[Setting up the Edge via DMS](#)".)

Overview of Running a Study

The list below is a brief overview of the steps for running a study.

Quick Help List: Typical Dosimetry Session



1. Turn the dosimeter on and check your battery power.
2. Reset the dosimeter.
 - This will clear out all of the data history before your study begins to ensure you have sufficient memory space on the Edge.
3. Set up your study parameters via DMS.
4. Calibrate the dosimeter.
5. Attach the dosimeter for your personal noise study.
6. Press the **Run/Stop**  button to start the study.
7. When you are ready to end your study, press the **Run/Stop**  button to stop the study.
8. Review your results either on the meter or download to DMS for further analysis (graphs/charts, saving and printing).

Figure 4-1: Quick help list for running a study

Positioning the Edge on your Shirt

Depending on what accessories you ordered with the Edge, you may have either clips on the top and bottom of the dosimeter or some other type of mounting device. (Refer to Chapter 6, [“Contact/Service Information”](#)).

➤ **How to attach the dosimeter**

1. Clip the dosimeter on your shirt and ensure the microphone is positioned as high on your shoulder as possible and away from your neck.
 - a. If the noise seems to come from one direction, place it on the shoulder closet to the noise source.
 - b. During monitoring, keep clothing from coming into contact with the windscreen to avoid contaminating your results.



Figure 4-2: Attaching the Edge on your shoulder

Checking Battery Power

Typically, the life of the battery is approximately 40 hours nominal without LED activated (see Appendix A for specific specifications). It is recommended to perform a daily download of the measured data while simultaneously charging the battery for maximum efficiency. A quick recharge with the EdgeDock ranges from 2 to 4 hours when half of the battery power is expended.

NOTE: Refer to [page iii](#) to view battery care and best practices.

There are two battery identifiers on the dosimeter which are the battery indicator icon and the battery power clock (see Figure 4-3).

➤ Checking battery power

1. The **battery indicator icon** (located at the top right of your screen) gives an approximation of battery life and is always present.
 - If the battery indicator is half shaded, this illustrates you have approximately 17 hours of battery life remaining.
 - If low battery appears, less than 8 hours of run time is available.
2. Additionally, there is a **battery time remaining measurement** which identifies the number of hours and minutes remaining on the dosimeter.
3. To view, press the up/down arrows ▲/▼. This will navigate you through the views of the dosimeter.

NOTE: The battery time remaining measurement can be disabled from the view of the meter. See [Chapter 3](#) for explanation on changing the display.

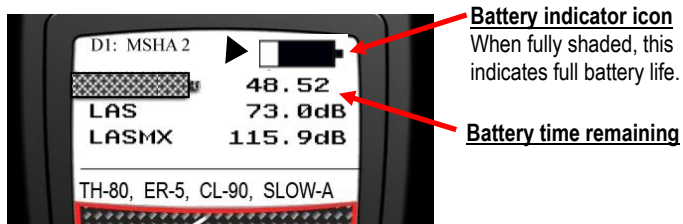


Figure 4-3: Battery indicators

Calibrating

It is recommended to calibrate your dosimeter before you run your study(ies) and after your study(ies) to ensure highly accurate measurement results. The steps below address how to calibrate for either a pre or post calibration.

➤ Calibrating the dosimeter




1. Remove the windscreen from the dosimeter by unscrewing it. (See Figure 6-2 for an illustration.)
2. Ensure the Edge is turned on and in the stop mode. (See [“Turning on”](#) and [“Turning Off”](#).)
3. Slide the Edge into the mouth of the calibrator.

NOTE: Ensure the adapter ring is inserted into the mouth of the calibrator before you slide the Edge into the cavity.

4. Turn on the calibrator and ensure parameters are set to 114 dB and 1000 Hz. (See *calibration manual for operation details*.)



Figure 4-4: Calibrating

5. **“CAL”** will flash on the display when detected.
6. Press the  button to trigger the calibration display.
7. To match the values on the calibration display, press repeatedly the **up** or **down** arrow in order to select the exact output on the calibrator (i.e., 114 dB).
8. When you have selected the appropriate dB level, press the  button.
9. A shaded bar will appear loading your calibration information. Then a summary calibration screen will appear indicating the dB level with date and time displayed.
10. To return to the measurement view screen, press the  button.
11. To end the calibration steps, turn off the calibrator. Detach the dosimeter from the calibrator.

Resetting the Dosimeter

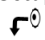
The Edge can be reset through the dosimeter keypad or via DMS. This will clear out all of the data history to ensure you have sufficient memory space on the Edge for new studies. The steps below outline how to reset your dosimeter.

➤ Reset

1. Ensure the meter is **Off**.
2. Turn the meter on by pressing the  button.
3. When the splash screen appears, press and **hold** the  and  buttons until the splash screen disappears.



Figure 4-5: Splash screen

4. The **Setup** menu appears on the Edge. Press the **up** or **down arrow** to select the reset icon  (the **arrows** and **enter key** icons will appear to its side).

NOTE: Setup menu is used to reset the dosimeter, change the contrast, and return to the main view.

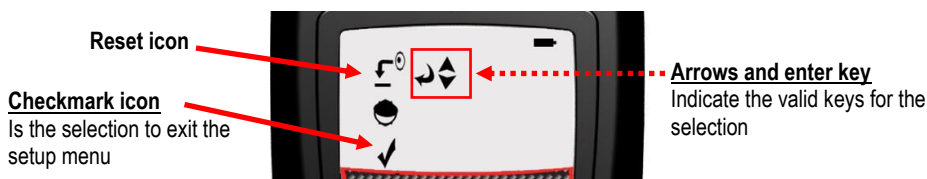








Figure 4-6: Resetting the Edge from the keypad

5. Press and hold the  button.
6. A 3, 2, 1 countdown will appear, and then a shaded bar will appear indicating the dosimeter is being reset.
7. To return to the measurement view screen, press the **down arrow** until the Checkmark (Exit) icon is selected and press the  button.

Adjusting the Contrast on the Edge

➤ Contrast

1. Ensure the meter is **Off**.
2. Turn the meter on by pressing the  button.
3. When the splash screen appears, press and **hold** the  and  buttons until the splash screen disappears. (See Figure 4-5 for splash screen.)
4. The **Setup menu** appears on the Edge. Press the **up** or **down arrow key** to select the Contrast  icon (the **arrows and enter key** icons will appear to its side).

NOTE: Setup menu is used to reset the dosimeter, change the contrast, and return to the main view.

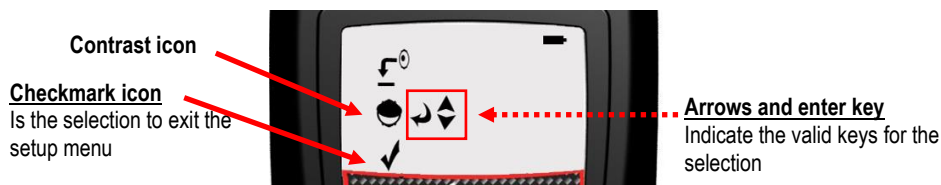





Figure 4-7: Changing the contrast from the keypad



5. Next press the  button.
6. A number will appear on your display (i.e., 50). Press the **up** or **down arrow** to increase or decrease the contrast of the Edge.
7. Press  button to accept the new contrast value.
8. To return to the measurement view screen, press the **down arrow** until the **Checkmark (Exit)** icon is selected and press the  button.

Running Studies

With a couple pushes on the keypad buttons, you will be running and viewing your studies. After you're done recording studies, you can load the study data into DMS to manipulate, analyze, save, and create reports. (See [Chapter 5](#) for viewing your logged data in DMS).

Starting a Run

➤ **How to run a noise study**

1. If your dosimeter is turned off, press the  button to power on.
2. Press and hold the  button.
 - A 3, 2, 1 countdown will appear.
3. When running, the following will appear:
 - A run indicator will appear on the top-right side.
 - The LED indicator will flash green (unless you disabled this in DMS).

Measurements

- Use up/down arrow to move through values.
- Views are customizable via DMS setup

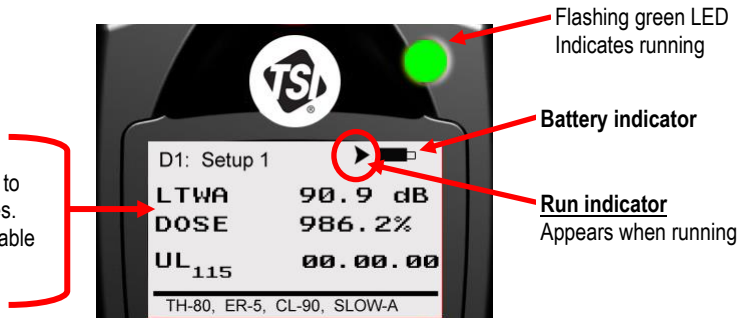




Figure 4-8: Display screen while running

Stopping a Study

While the dosimeter is running, you can end the study by pressing and holding the stop button.

➤ How to stop a noise study

1. While running, press and hold the  button.
 - a. A 3, 2, 1 countdown will appear.
 - b. The stop indicator  will be shown in the display.

Indicators/Icons on the Display

The Edge is equipped to notify you of operational/status updates. These indicators (or alert notices) are located on the top right-hand side of the screen. Table 4-1 explains the function of each indicator.







Indicator Icon	Explanation
	Stop —indicates the dosimeter is currently in the stop status (opposed to run).
	Run —indicates the dosimeter is currently logging a study.
	Battery charge status —when completely shaded in black, this indicates full battery power. If half shaded, this represents ½ battery power
OL	Overload —will appear whenever the input signal exceeds the range of the dosimeter.

Table 4-1: Indicators (i.e., run, stop, battery, and OL)

Viewing Measurements on the Display

The up/down arrows on the keypad of the dosimeter enable you to move through the various measurements. Use the enter  button to switch the display between (toggle) dosimeters one, two, and three measurements and settings. For specific information on the views of the Edge, please see "[Views on the Edge](#)".)

Viewing measurements

1. Press the  or  arrow. This will move you through the views on the display.



NOTE: If you enabled only one measurement to appear on the display, when you press the up/down arrows it will not show any other measurement values.

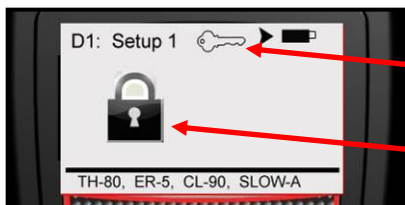
Locking or Securing your Dosimeter During Run

As explained previously under DMS setup parameters, the security or lock feature is designed to lock the meter during run to ensure the study will not be stopped unless the lock feature is disabled. (Setting this feature is programmed via DMS. See "[Locking or Securing](#)" for more details.)

Locking or Securing

➤ How to lock or secure

1. Turn the dosimeter on and press the  button to begin logging your study.
2. To enable the lock, press  button three consecutive times within one second intervals.
 - ☑ The Lock screen will appear.






- Key indicator**
Indicates dosimeter is locked while running.
- Padlock icon**
Secure all

Figure 4-9: Locking/Securing run

NOTE: If lock/secure run does not activate, please check that locking is set up on your dosimeter.

Unlocking

➤ How to unlock

1. To unlock, press  button three consecutive times, within one second intervals, and then press the  button.
 - a. If the padlock icon and the key indicator were on the screen, these will vanish and the measurement view will appear along with the run indicator.
 - b. If you enabled the lock feature (with the key indicator showing and the measurement view showing), then the key indicator will disappear.
2. To stop your study, press the  button and the 3, 2, 1 will display as it ends the study.
3. To download and view your results in DMS, please see [Chapter 5.](#)

(This page intentionally left blank)

5: Viewing your Studies in DMS

The focus of this chapter is to discuss how to view your studies via Detection Management Software. The first section explains how to retrieve your studies from the dosimeter, and the subsequent sections will then walk you through viewing, organizing, and customizing your studies.

NOTE: You have the option of 15 different languages in DMS including: English, Spanish, Chinese (Simplified), Korean, Portuguese, German, French, Italian, Russian, Japanese, Turkish, Czech, Polish, Swedish, and Norwegian.

Downloading Data



Loading your studies entails communicating, downloading the sessions/studies (files), and viewing the files in the data finder page, charts and tables, or report views.

➤ **Downloading** 

1. Ensure DMS is installed.
 - Install the software from the USB flash drive or visit our website at www.tsi.com.
2. Dock the dosimeter and connect it to your PC using the USB cable (see, "[Communicating and downloading data](#)").



Figure 5-1: Communicating between your PC and the Edge

3. **Power on** the Edge by pressing the  button.
4. In DMS' start screen, choose .

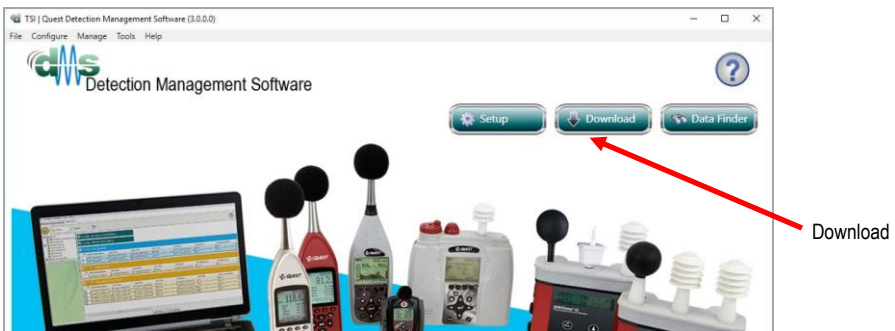
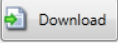


Figure 5-2: DMS start screen

5. Select Noise Dosimetry (see 1), Edge (see 2), and Edge 5 (see 3). Select the docked Edge (s) to download (see 4).
6. Click  button.
 - In the status field, it will state download is successful.
 - Then, a clear the instrument memory prompt will appear. Click **yes** to clear the memory or click **no** if you want to save the data on the dosimeter.
7. The sessions (files) will load and post to the Data Finder page under Family: Noise Dosimetry heading.

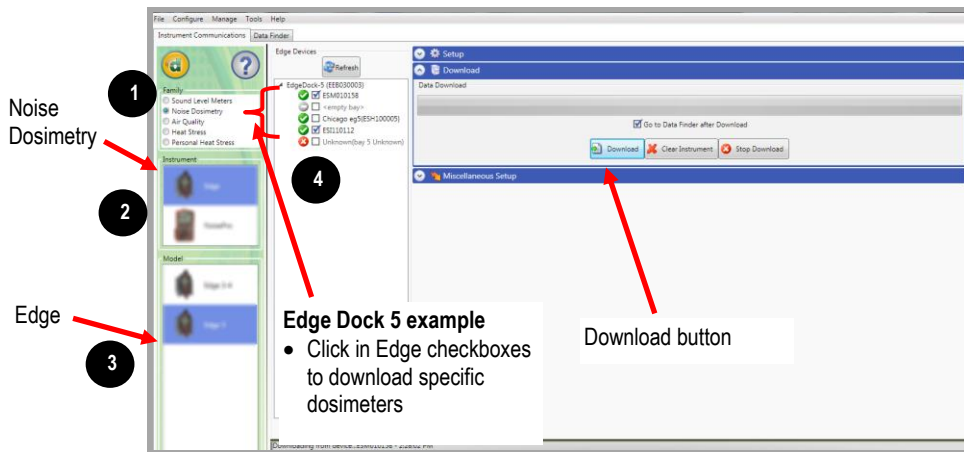


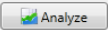
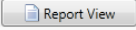
Figure 5-3: Downloading in DMS with the Edge

NOTE: DMS provides an advanced feature to distribute/organize Edge studies to sessions while downloading. Refer to the “Edge and Distributing Data” section in the Edge chapter of the DMS User Manual.

Viewing Data and Data Finder Page

When you download the data via the the download feature, the data is stored and viewable via the data finder page with advanced charting, tables, and reporting capability. The information is viewable in customizable graphs and/or with measurements/parameters displayed on the top navigational bar.

➤ Selecting and viewing data

- In the **Data Finder** page (see 1), select the **Noise Dosimetry** data (see 2) by clicking on either the session or study (**Note:** You may need to expand to see the study data.)
 - Once selected, it will appear with a blue shading.
- Optional:** To reorganize the data displayed in the data finder columns, click drag and drop the titles of the columns in different positions. To shrink/expand the columns, click and drag the black column divider(s). (**Note:** These methods are similar to positioning/expanding in Microsoft® Excel® spreadsheet program.)
- To view in **Charts and Tables**, click on  or  buttons.

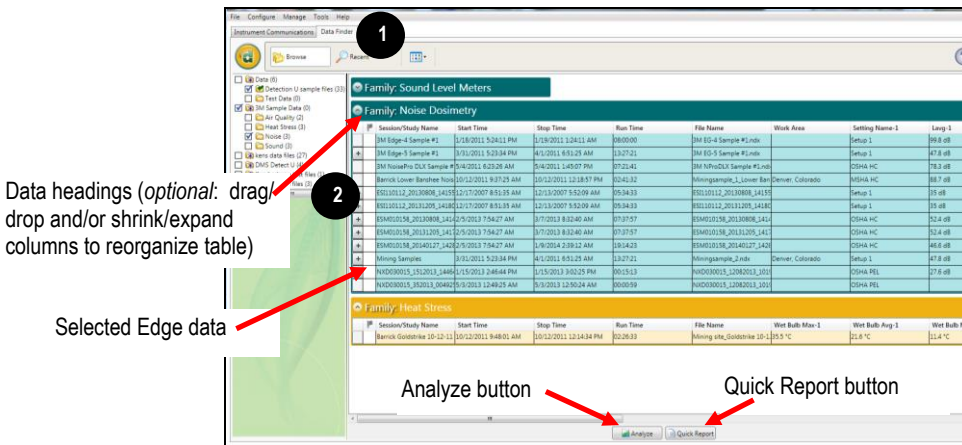


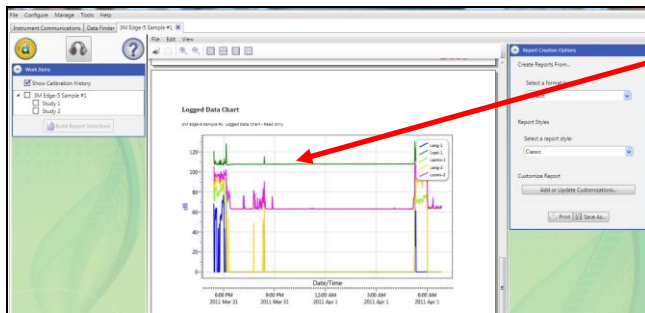


Figure 5-4: Data Finder page with the downloaded data

Report View

The  button provides a quick link to view/print the Edge data. To customize the data, refer to the next session, panel view page.

- Click  to print the report.



Edge, logged data chart displayed in DMS report (scroll through to view the online report if applicable).

Figure 5-5: Sample data report in DMS

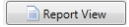
Panel Layout View(charts/tables)

When you are in the data finder page (see above), select either the **Analyze** button or double-click on a session/study to view the data in charts and tables as displayed in Figure 5-6. The measurements and parameters will be displayed in charts and tables which may be customized for analysis and/or reporting purposes.


1. Panel Layout View is divided into **Work Items** (see 1), **Add Panel** (see 2), and **Arrange Panels** (see 3) palettes, as well as data panels (see 4).

- **Work items (1)**—select either the session or study (in order to view appropriate measurement/parameter data).
- **Add panel (2)**—double-click on a chart/table type and it will appear as a panel on your screen.
- **Arrange panels (3)**—displays the order of the charts/tables which appear in the panel layout. Also, when a chart/table is selected in the arrange panels palette, the associated data panel is selected. The resize handles are applied and the panel is brought into view. (This is very useful when several panels are displayed.) To delete a panel, click on a chart/table and press delete from your keyboard.
- **Data Panels (4)**—used to view your measurement and/or parameters from your study.

NOTE: Use the toolbar bar icons and/or configure button to customize parameters.

2. To view the data as a report, click the  button.

NOTE: The panels will print in the order in which they are displayed in the panel layout view.

3. To toggle/switch back to panel layout view, click the  button.

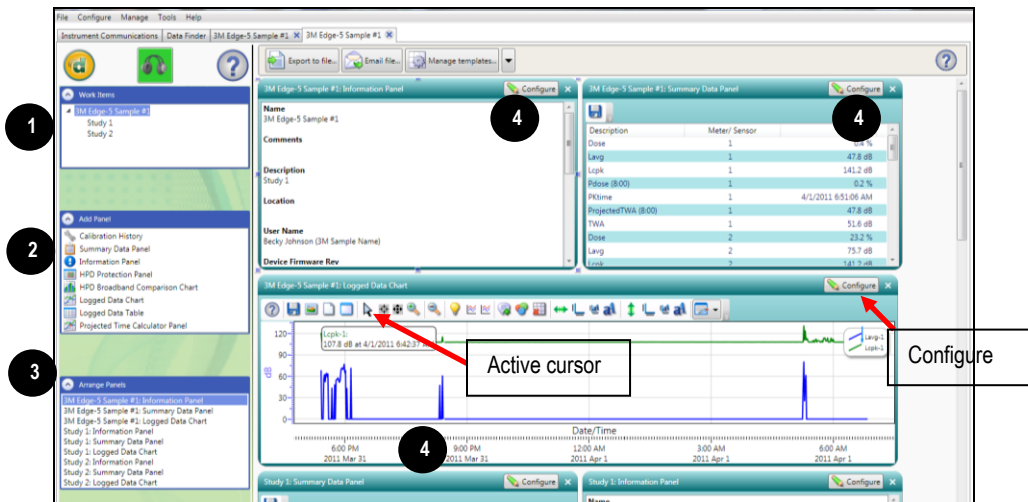


Figure 5-6: Panel layout view (viewing the data in charts and tables)






Quick Tips with Panels (charts/tables)

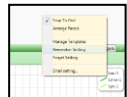
- **To stretch the panel**, click on one of the grips along the panel's edges and drag the mouse. The panel will expand or shrink when resizing.
- **To move the panel**, click on the panel's header and drag and drop to the appropriate panel position.

NOTE: By default, the panels will snap into place on an invisible grid. Right-click outside the panel area and click **Snap to Grid** to clear the checkbox and allow free panel placement.

- **To change ranges**, when clicking on either the x-axis or y-axis, click and drag the mouse until the appropriate range is selected.

NOTE: It will span the numbers up or down depending on how you drag the mouse.

- **To add labels**, click on the add labels  icon. Right-click and select edit text to add note/label on the chart. Type in text and press the **Enter** key (on your keyboard). To move the label, left-click and hold to drag to appropriate location on chart.
- **To customize chart colors**, click on the  icon and using the properties box, select different colors as needed.
- **To customize x or y axis font type**, click on these  or  icons.
- **To export data to .xls file**, click on the export  icon.
- **To save a layout**, right-click outside the panel area as displayed below. Click **Remember Setting**.



6: Technical Support/ Customer Service

Replacing Microphone and Windscreen

Attaching/Detaching

The Edge features a field replaceable microphone and a screw-on removable windscreen.

NOTE: If you ordered an Edge kit, extra windscreen(s) will be included in your case.

Attaching/Detaching the windscreen and microphone

1. First, unscrew the windscreen by turning the red ring (not the foam!) in a counterclockwise direction.
2. If you are replacing the windscreen, screw on a new windscreen in a clockwise direction until it fits firmly.
3. To unscrew the microphone, turn the microphone in a counterclockwise direction until it is removed.
4. To attach a new microphone, screw the microphone on clockwise until it fits tightly.

The following diagram illustrates how to assemble these two devices.

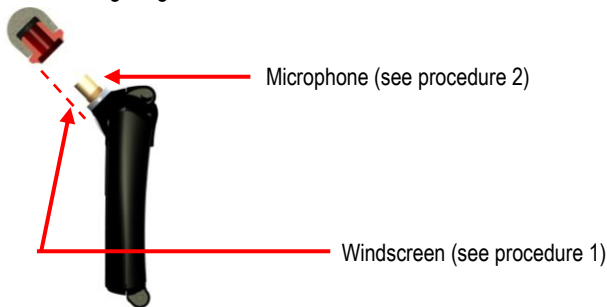


Figure 6-1: Microphone and windscreen assembly

Hard Hat Attachment Kit

The following instructions explain how to assemble and attach the hard hat kit to a standard hard hat.

Hard Hat Attachment kit

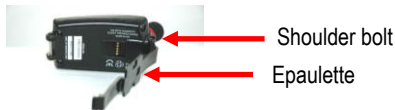
- A. Epaulette mount
- B. Hard hat mount



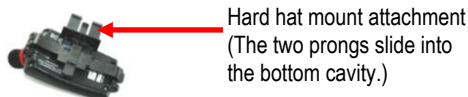
- Using a 3/32" hex wrench, twist the top shoulder bolt counterclockwise to loosen and remove the bolt and the clip. Also, remove the bottom clip with the hex wrench. Once the bottom clip is removed, place the shoulder bolt back into its place and tighten back up with the hex wrench.



- Place the epaulette mount (see "A" above) into the top bracket of the Edge. Then slide the bolt into place and tighten with a hex wrench. Then, the epaulette mount snaps onto the bottom shoulder bolt.



- Slide the two prongs of the hard hat mount (see "B" above) underneath the epaulette mount (see "A" above) until it clicks into place.



- Taking the Edge with the assembled hard hat attachments, slide into the side of hard hat. It will fit snugly into the hard hat opening.



Slide the two-sided prongs into the hard-hat opening.

Contact/Service Information

This section gives directions for contacting TSI Incorporated for technical information and directions for returning the Edge 5 Personal Noise Dosimeter for service.

Technical Support Contacts

If you have any difficulty setting or operating the instrument, or if you have technical or application questions about this system, contact TSI's Technical Support.

North America and Asia Pacific	Europe, Middle East, and Africa
Telephone: 1-800-680-1220 (USA); +1 651-490-2860 (Outside USA)	Telephone: +49 241-52303-0
Fax: +1 651-490-3824	Fax: +49 241 52303-49
E-mail: technical.services@tsi.com	E-mail: tsigmbh@tsi.com

Service Contact Information

If your instrument does not operate properly, or if you are returning the instrument for service, visit our website at <http://rma.tsi.com> for a Return Material Authorization, or contact Customer Service.

North America and Asia Pacific	Europe, Middle East, and Africa
TSI Incorporated 1060 Corporate Center Drive Oconomowoc, WI 53006-4828	TSI Instruments Ltd. Stirling Road Cressex Business Park High Wycombe, Bucks HP12 3ST United Kingdom
Telephone: 1-800-680-1220 (USA); +1 651-490-2860 (Outside USA)	Telephone: +44 (0) 149 4 459200
E-mail: technical.services@tsi.com	E-mail: tsiuk@tsi.com

Returning for Service

Visit our website at <http://rma.tsi.com> and complete the on-line “Return Merchandise Authorization” form or call TSI at 1-800-680-1220 (USA) or (651) 490-2860, or 001 651 490-2860 (International) for specific return instructions.

Customer Service will need the following information:

- The instrument model number
- The instrument serial number
- A purchase order number (unless under warranty)
- A billing address
- A shipping address

Use the original packing material to return the instrument to TSI. If you no longer have the original packing material, seal off any ports to prevent debris from entering the instrument and ensure that the display and the connectors on the instrument front and back panels are protected. This instrument is very fragile and must be packed in a manner appropriate for a precision instrument.

A: Specifications

*All specifications subject to change

Standards

- ANSI S1.25 Personal Noise Dosimeters
- IEC61252 Personal Sound Exposure Meters
- RoHS compliant
- Intrinsic safety:
 - EN 60079-0:2013, EN 60079-11:2012, EN 60079-26:2014
 - IECEx certification number: SIM 08.0012
 - ATEX Directive 94/9/EC for use in Potentially Explosive Atmosphere certification number: Sira 09ATEX2269
 - CSA International (US and Canada) certificate number: 2283414
 - MSHA Approval number: 18-A100008-0

Safety Markings

Manufacturer	TSI Incorporated
Equipment/model	eg5 Dosimeter
Code	Ex ia I/IIC 143°C IP65 Ambient temp. range: -10°C<Tamb<+50°C
(Alternate Code)	Ex ia I/IIC T4 IP65 Ambient temp. range: -10°C<Tamb<+40°C
Certificate number	IECEx SIM 08.0012
Maximum charge input voltage	Um=5.6V

Mechanical Characteristics

Housing	Plastic case with black, gray background and white outlined buttons.
Size	3.5" long x 2.1" wide x .75" thick (without microphone) (88 mm long x 53 mm wide x 19 mm thick)
Weight	2.5 oz. (71 g), less mounting device

Power/Electrical Characteristics

Life	Up to 40 hours of continuous operation at normal operation without LED activated under reference to environmental conditions when full capacity batteries are installed. It is recommended to charge the battery frequently for maximum efficiency.
Type	Lithium Polymer (Flat cell)
Memory capacity	120 hours

Environmental Effects

The typical time interval needed to stabilize after changes in environmental conditions is 5 minutes for each 10 °C change.

Temperature

Operating	+14 °F to + 122 °F (-10 °C to + 50 °C) for 143°C I.S. rating. +14 °F to + 104 °F (-10 °C to + 40 °C) for T4 I.S. rating.
Storage	-13 °F to + 140 °F (-25 °C to + 60 °C).
Humidity Range	0 to 95% Non-Condensing

User Interface

Display

Size: 128 x 64 graphic

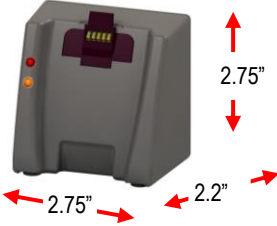
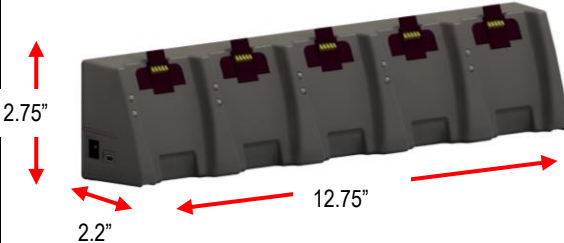
Keypad

4 keys up arrow, down arrow, run/stop, on/off enter.

EdgeDock1 and EdgeDock5

EdgeDock1 and EdgeDock5 are powered by a 12-volt charger adapter with international plug adapters. The backside of the Edge slides into the hook of the EdgeDock1 or EdgeDock5 with the mounting clasps rotating to a 90-degree angle (which will rest on a table/work area). Additionally, the EdgeDock1 (or EdgeDock5) are equipped with two single screw slots for wall mounting purposes.

Physical Attributes of EdgeDock1 and EdgeDock5

<p>LED amber indicator</p>	<p>Indicates EdgeDock1 or EdgeDock5 is “powered on”. (Lower of the two shown LEDs).</p>
<p>LED Red indicator and LED Green indicator</p>	<p>Signifies status of charging. Flashing red indicates charging. Solid green indicates charging is complete.</p>
<p>Size of EdgeDock1</p>	<p>2.75" x 2.75" x 2.2" (6.99 cm x 6.99 cm x 5.6 cm)</p> 
<p>Size of EdgeDock5</p>	<p>12.75" x 2.2" x 2.75" (32.29 cm x 5.08 cm x 6.99 cm)</p> 

Measurements

Types

Displayed Data and status indicators	SPL, Average value (Lavg or Leq), Maximum value (Lmx), Minimum value (Lmn), Peak Value (Lcpk), Exposure, Run Time, TWA, UL Time, Lc-a
---	---

Measurement Parameters

Dosimeters	Up to three dosimeters at once (eg5), each with its own assignable profile (via DMS only).
RMS Range	70 to 140 dB
RMS Weighting	A or C weighting
RMS Time Response	Fast or Slow
Exchange Rate (ER)	3 dB, 4 dB, or 5 dB
Peak Range	110 dB to 143 dB
Peak Weighting	A, C or Z weighting
Criterion Levels	70 to 90 dB in 1 dB increments
Threshold	70 to 90 db in 1 dB increments
Upper Limit (UL)	70 to 140 dB in 1 dB increments

Calibration

Pre-calibration	When performed, valid prior to the start of the study.
Post-calibration	When performed, valid for the previous study.
Storage	Calibrations for a study are stored in the related study file.
Calibrator requirement	Calibrations should be performed at 114 dB at 1 kHz.

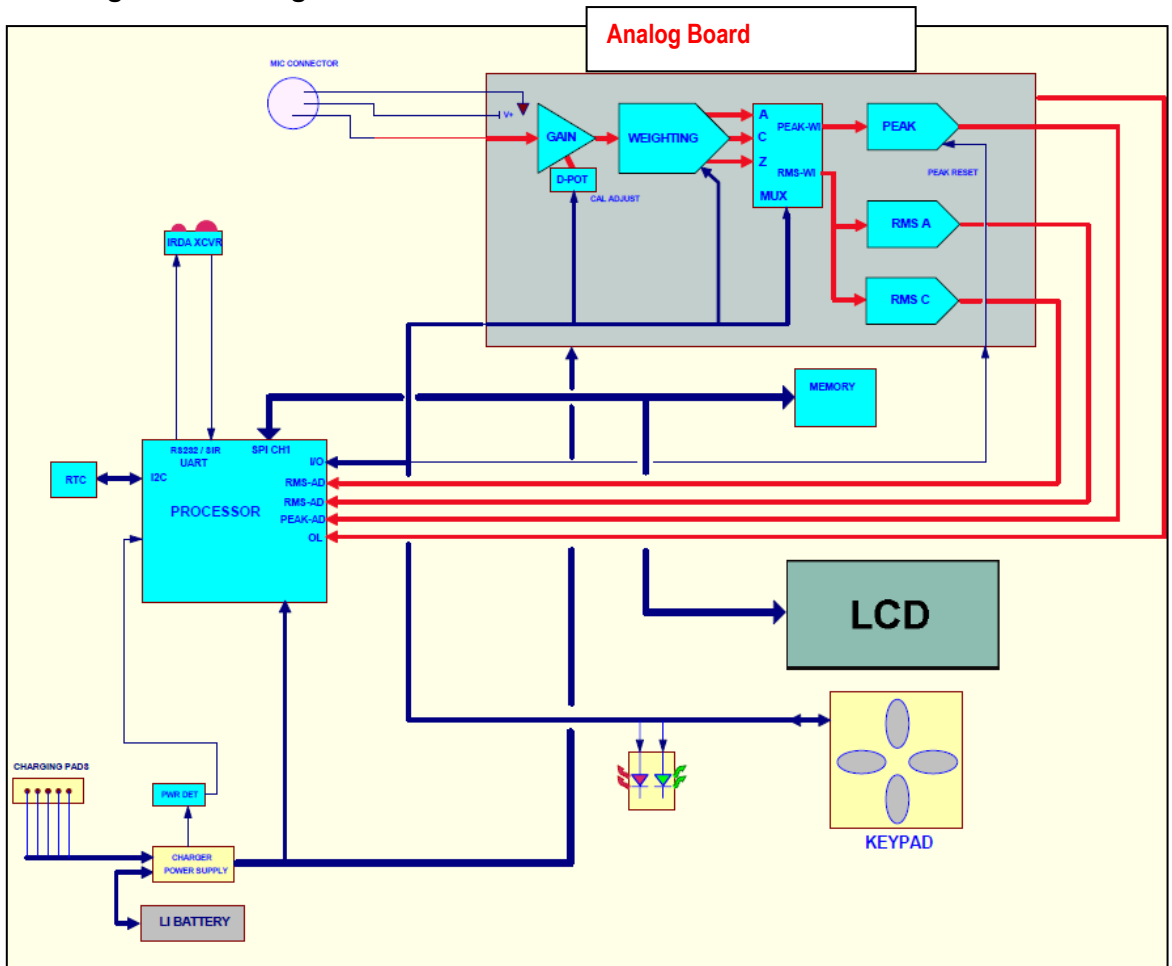
Communications

The Edge communicates via the EdgeDock1 and/or the EdgeDock5. Communications is supported via USB cable from the docking station to the PC.

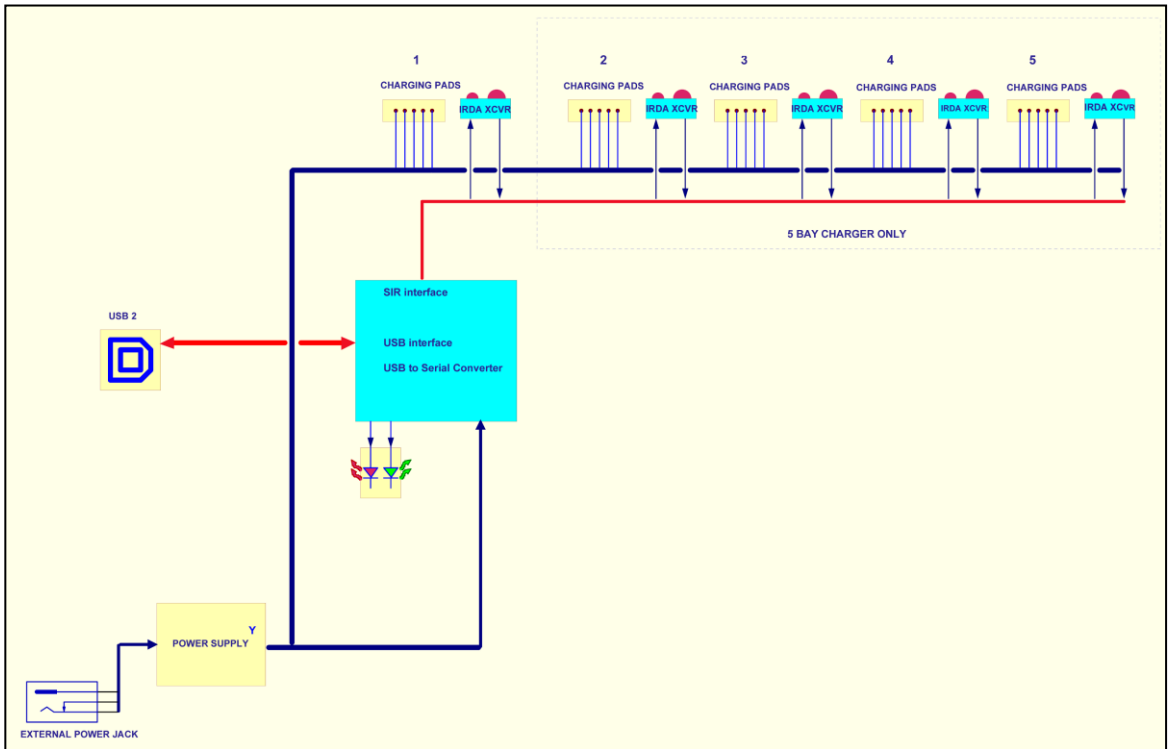
Special Functions

Security	Key sequence protection through the keypad when running.
Auto-Run	May be programmed via DMS.
Logging	Data logging which includes Lavg/Leq, Lmx, Lcpk

Edge Block Diagram



Edge Block Diagram (continued)



Warranty

(For country-specific terms and conditions outside of the USA, please visit www.tsi.com.)

Seller warrants the goods, excluding software, sold hereunder, under normal use and service as described in the operator's manual, to be free from defects in workmanship and material for **12 months**, or if less, the length of time specified in the operator's manual, from the date of shipment to the customer. This warranty period is inclusive of any statutory warranty. This limited warranty is subject to the following exclusions and exceptions:

- a. Hot-wire or hot-film sensors used with research anemometers, and certain other components when indicated in specifications, are warranted for 90 days from the date of shipment;
- b. Pumps are warranted for hours of operation as set forth in product or operator's manuals;
- c. Parts repaired or replaced as a result of repair services are warranted to be free from defects in workmanship and material, under normal use, for 90 days from the date of shipment;
- d. Seller does not provide any warranty on finished goods manufactured by others or on any fuses, batteries or other consumable materials. Only the original manufacturer's warranty applies;
- e. This warranty does not cover calibration requirements, and seller warrants only that the instrument or product is properly calibrated at the time of its manufacture. Instruments returned for calibration are not covered by this warranty;
- f. This warranty is **VOID** if the instrument is opened by anyone other than a factory authorized service center with the one exception where requirements set forth in the manual allow an operator to replace consumables or perform recommended cleaning;
- g. This warranty is **VOID** if the product has been misused, neglected, subjected to accidental or intentional damage, or is not properly installed, maintained, or cleaned according to the requirements of the manual. Unless specifically authorized in a separate writing by Seller, Seller makes no warranty with respect to, and shall have no liability in connection with, goods which are incorporated into other products or equipment, or which are modified by any person other than Seller.

The foregoing is **IN LIEU OF** all other warranties and is subject to the LIMITATIONS stated herein. **NO OTHER EXPRESS OR IMPLIED WARRANTY OF FITNESS FOR PARTICULAR PURPOSE OR MERCHANTABILITY IS MADE. WITH RESPECT TO SELLER'S BREACH OF THE IMPLIED WARRANTY AGAINST INFRINGEMENT, SAID WARRANTY IS LIMITED TO CLAIMS OF DIRECT INFRINGEMENT AND EXCLUDES CLAIMS OF CONTRIBUTORY OR INDUCED INFRINGEMENTS. BUYER'S EXCLUSIVE REMEDY SHALL BE THE RETURN OF THE PURCHASE PRICE DISCOUNTED FOR REASONABLE WEAR AND TEAR OR AT SELLER'S OPTION REPLACEMENT OF THE GOODS WITH NON-INFRINGEMENTS.**

TO THE EXTENT PERMITTED BY LAW, THE EXCLUSIVE REMEDY OF THE USER OR BUYER, AND THE LIMIT OF SELLER'S LIABILITY FOR ANY AND ALL LOSSES, INJURIES, OR DAMAGES CONCERNING THE GOODS (INCLUDING CLAIMS BASED ON CONTRACT, NEGLIGENCE, TORT, STRICT LIABILITY OR OTHERWISE) SHALL BE THE RETURN OF GOODS TO SELLER AND THE REFUND OF THE PURCHASE PRICE, OR, AT THE OPTION OF SELLER, THE REPAIR OR REPLACEMENT OF THE GOODS. IN THE CASE OF SOFTWARE, SELLER WILL REPAIR OR REPLACE DEFECTIVE SOFTWARE OR IF UNABLE TO DO SO, WILL REFUND THE PURCHASE PRICE OF THE SOFTWARE. IN NO EVENT SHALL SELLER BE LIABLE FOR LOST PROFITS, BUSINESS INTERRUPTION, OR ANY SPECIAL, INDIRECT, CONSEQUENTIAL OR INCIDENTAL DAMAGES. SELLER SHALL NOT BE RESPONSIBLE FOR INSTALLATION, DISMANTLING OR REINSTALLATION COSTS OR CHARGES. No Action, regardless of form, may be brought against Seller more than 12 months after a cause of action has accrued. The goods returned under warranty to Seller's factory shall be at Buyer's risk of loss, and will be returned, if at all, at Seller's risk of loss.

Buyer and all users are deemed to have accepted this LIMITATION OF WARRANTY AND LIABILITY, which contains the complete and exclusive limited warranty of Seller. This LIMITATION OF WARRANTY AND LIABILITY may not be amended, modified or its terms waived, except by writing signed by an Officer of Seller.

Service Policy

Knowing that inoperative or defective instruments are as detrimental to TSI as they are to our customers, our service policy is designed to give prompt attention to any problems. If any malfunction is discovered, please contact your nearest sales office or representative, or call TSI's Customer Service department at 1-800-874-2811 (USA) or +001 (651) 490-2811 (International).

(This page intentionally left blank)

B: Glossary of Terms

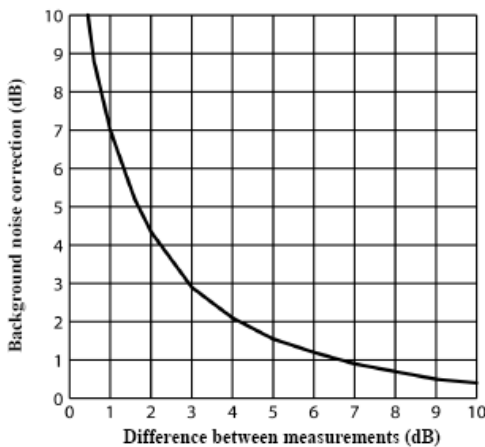
Background Noise, effects of

Background noise can cause considerable error in measurement when its level is high relative to the level of a noise source of interest. If you can make measurements both with and without the contribution of a noise source of interest, you can mathematically subtract the background noise from the combined measurement, yielding the level of the noise source of interest alone. The accuracy of this determination improves as the difference between the two measurements increases.

To remove background noise

1. Obtain a measurement that includes the contribution of the noise source of interest (the combined measurement).
2. Make a second measurement under exactly the same conditions as in Step 1 but without the presence of the noise source of interest (the background noise measurement).
3. Determine the decibel difference between these two measurements.
4. Find that difference on the *x*-axis of the figure below.
5. Find the point on the curve directly above this difference.
6. Read the corresponding value on the *y*-axis for that point (the correction value).
7. Subtract the correction value from the combined measurement.

Example: Measurements with and without the noise source of interest are 91 dB and 90 dB, respectively. For a difference of 1 dB, the background noise correction value is 7 dB. Therefore, the level for the noise source of interest without the noisy background is 84 dB.



C-A

The C-A measurement is an L_{avg} that enhances the low-frequency components of the sound signal. It is the result of subtracting an A-weighted L_{avg} from a simultaneously collected C-weighted L_{avg} and is sometimes used as the NRR (noise reduction rating) factor to determine if hearing protection devices are adequate for usage in the field.

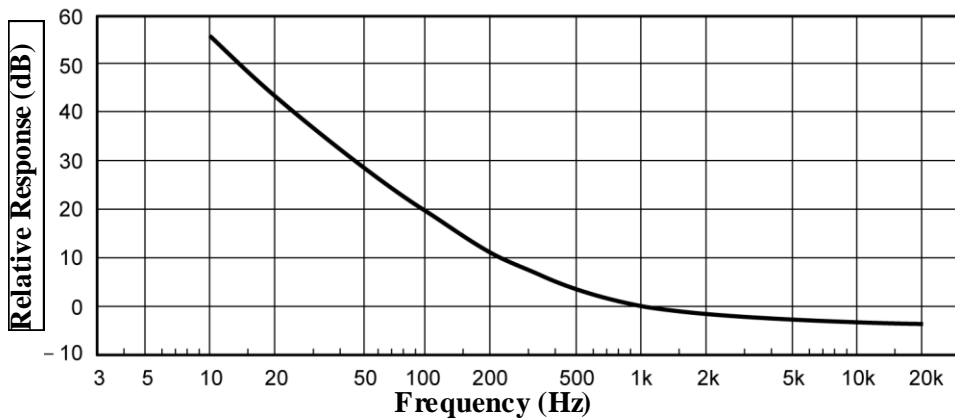


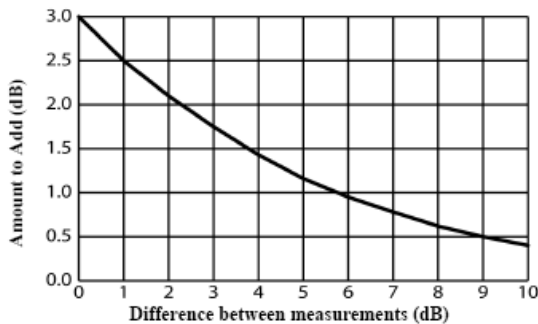
Figure B-1: C-A weighting response curve

Combining Noise sources

Because sound levels are measured in decibels they cannot be simply added together. A sound level of 90 dB plus 90 dB does not yield 180 dB but rather 93 dB. The procedure for mathematically determining a combined level of sound from independent measurements made for two noise sources is given below.

1. Make independent measurements for both noise sources, where each exists without the presence of the other.
2. Determine the decibel difference between these two measurements.
3. Find that difference on the x-axis of the figure below.
4. Find the point on the curve directly above this difference.
5. Read the corresponding value on the y-axis for that point (the Amount to Add).
6. Add this value to the larger of the two measurements.

Example: Independent measurements for the two noise sources yielded levels of 90 dB and 91 dB. For a difference of 1 dB, the correction factor taken from the curve below is 2.5 dB. Therefore, the combined level when these two sound sources are present in the measurement area at the same time 93.5 dB.



Crest Factor

Crest Factor is the ratio of the instantaneous peak value of a wave to its RMS value. This is a performance specification of a meter's ability to process signals that have peaks that are substantially higher than their RMS averages.

Criterion Level (CL)

Criterion level is the average SPL that will result in a 100% dose over the Criterion time, usually 8 hours. The Criterion Level is typically set by a regulating agency, such as OSHA, and is not usually applicable for community noise monitoring. Examples: OSHA mandates the Criterion Level (maximum allowable accumulated noise exposure) to be 90 dB for 8 hours. For an 8-hour sample, an average level (Lavg) of 90 dB will result in 100% dose. For the OSHA HEARING CONSERVATION AMENDMENT, the "action level" is 85 dB for 8 hours. This would result in a 50% dose reading. Note that the Criterion Level has not changed. (If the Criterion Level were changed to 85 dB then an 8-hour average of 85 dB would result in 100% dose.)

Criterion Time

The time over which the Criterion Level is established, generally 8 hours.

Decibel (dB)

Sound Level Meters use the decibel as the unit of measure known as Sound Pressure Level (SPL). SPL uses the ratio between a reference level of 20 microPascals (.00002 Pascals) and the level being measured. $SPL = 20 \log(\text{measured level}/\text{reference level})$. Example: the SPL for 1 Pascal is $20 \log(1 \text{ Pascal}/.00002 \text{ Pascal}) = 94 \text{ dB}$. 20 microPascals (.00002 Pascals) is considered the average threshold of hearing. A whisper is about 20 dB. A normal conversation is typically from 60 to 70 dB, and a noisy factory from 90 to 100 dB. Loud thunder is approximately 110 dB, and 120 dB borders on the threshold of pain.

Dose

Related to the Criterion Level, a dose reading of 100% is the maximum allowable exposure to accumulated noise. For OSHA, 100% dose occurs for an average sound level of 90 dB over an 8-hour period (or any equivalent exposure). By using a TWA reading rather than the average sound level, the time period is no longer explicitly needed. A TWA of 90 dB is the equivalent of 100% dose. The dose will double (halve) every time the TWA increases (decreases) by the Exchange Rate.

Example: OSHA uses an Exchange Rate of 5 dB. Suppose the TWA is 100 dB. The dose would double for each 5 dB increase over the Criterion Level of 90 dB. The resulting dose is therefore 400%. If the TWA was instead equal to 80 dB then the dose would halve for each 5 dB below the Criterion Level. The resulting dose would be 25%. When taking noise samples less than the full workday, dose is an easy number to work with because it is linear with respect to time. Example: If a 0.5-hour sample results in 9% dose and the workday is 7.5 hours long, then the dose for the full workday would be a 135% dose ($7.5 / 0.5 \times 9\%$). This is computed making the assumption that the sampled noise will continue at the same levels for the full 7.5-hour workday.

Exchange Rate (ER – also known as the Doubling Rate)

Exchange rate refers to how the sound energy is averaged over time. (Also, referred to as Doubling Rate.) Using the decibel scale, every time the sound energy doubles, the measured level increases by 3 dB. This is the 3 dB exchange rate that most of the world uses. For every increase of 3 dB in the time weighted average, the measured DOSE would double. Some organizations such as OSHA in the U.S. have argued that the human ear self-compensates for changing noise levels and they felt that the 3 dB exchange rate should be changed to more closely match the response of the human ear. OSHA currently uses a 5 dB exchange rate, which would mean that the reported DOSE would double with every 5 dB increase in the time weighted average. The exchange rate affects the integrated reading L_{avg} , DOSE, and TWA but does not affect the instantaneous sound level.

Field Calibration (vs. Factory Calibration), pre-calibration, post-calibration

To be sure the dosimeter is functioning within specified tolerance limits, it should be returned to the factory annually for a factory recalibration. To verify that the dosimeter is measuring properly during normal use, field calibrations should be performed. Pre-calibration is performed prior to any data being recorded by the dosimeter. During a pre-calibration, the dosimeter level may be adjusted to match the calibrator output level. Post-calibration is a simple verification that the instrument has remained in calibration throughout the measurement period.

Free field setting (microphone)

Measurements made in an area without sound reflections, diffractions and absorptions caused by nearby objects (including the operator). Sound waves are free to spread out continuously, like ripples on a pond, without reflection. When making free field measurements with a dosimeter set up for use as a sound level meter, the microphone is typically pointed directly at the sound source.

Hearing Conservation (HC)

The Occupational Safety and Health Administration (OSHA) and Mine Safety and Health Administration (MSHA) provide regulatory standards for hearing conservation programs. In addition, the American Conference of Governmental Industrial Hygienists (ACGIH) provides industrial standards for hearing conservation programs. <http://www.osha.gov/>, <http://www.msha.gov/>, <http://www.acgih.org/home.htm>.

Hertz (Hz)

Unit of vibration frequency in cycles per second.

Lavg (Average Level)

Lavg is the average sound level measured over the run time. This becomes a bit confusing when thresholds are used. Any sound below the threshold is not included in this average. Remember that sound is measured in the logarithmic scale of decibels therefore the average cannot be computed by simply adding the levels and dividing by the number of samples. When averaging decibels, short durations of high levels can significantly contribute to the average level. Example: Assume the threshold is set to 80 dB and the Exchange Rate is 5 dB (the settings of OSHA's Hearing Conservation Amendment). Consider taking a one-hour noise measurement in an office where the **A**-weighted sound level was typically between 50 dB and 70 dB. If the sound level never exceeded the 80 dB threshold during the one hour period, then the Lavg would not indicate any reading at all. If 80 dB was exceeded for only a few seconds due to a telephone ringing near the instrument, then only those seconds will contribute to the Lavg resulting in a level perhaps around 40 dB (notably lower than the actual levels in the environment).

LEP,D

Daily personal noise exposure level.

Leq (Equivalent Level)

The true equivalent sound level measured over the run time. The term Leq is functionally the same as Lavg except that it is only used when the Exchange Rate is set to 3 dB and the threshold is set to none.

Logging

(Also called Data Logging.) Certain measurements, such as average level (Lavg) and maximum level (max), can be recorded by the dosimeter at regular intervals. For example: A dosimeter is set to log Lavg and max at one minute logging intervals. If the dosimeter runs for one hour, then it would log 60 Lavg results and 60 max levels. You would be able to see the average and maximum levels for each minute of the one hour run time.

Maximum Level (Lmax)

The highest sampled sound level during the instrument's run time allowing for the unit's Response Time setting (Fast or Slow).

Measurement Range

The decibel range within which the unit's measurements are valid.

Minimum Level (Lmin)

The lowest sampled sound level during the instrument's run time allowing for the unit's Response Time setting (Fast or Slow).

Noise Floor

In a "Perfectly Quiet" room, the electrical noise produced by the microphone is approximately 35 dB on A-weighting and 45 dB on C-weighting. These levels are known as the Noise Floor of the instrument. The Noise Floor can cause inaccurate measurements at low measurement levels.

Measurements must always be at least 5 dB above the Noise Floor to be valid. Therefore, the lowest valid measurements of the dosimeter are approximately 40 dB on **A-Weighting** and 50 dB on **C-Weighting**.

Peak Level

Peak is the highest instantaneous sound level that the microphone detects. Unlike the Max Level, the peak is detected independently of the unit's Response Time setting (Fast or Slow). Example: The peak circuitry is very sensitive. Test this by simply blowing across the microphone. You will notice that the peak reading may be 120 dB or greater. When taking a long-term noise sample (such as a typical 8-hour workday sample for OSHA compliance), the peak level is often very high. Because brushing the microphone over a shirt collar or accidentally bumping it can cause such a high reading, the user must be careful of placing too much emphasis on the reading.

PEL (Permissible Exposure Level)

The **A-weighted** sound level at which exposure for a Criterion Time, typically eight hours, accumulates a 100% noise dose.

Projected Time

The variable amount of time used to make a projected dose calculation from an actual dose measurement.

Random incidence (microphone)

This only applies to Class/Type 1 microphones. Measurements made in an area where sound waves are coming from all directions, including reflections and diffractions. When the dosimeter is being used as a sound level meter in an area where reflections and diffractions from nearby objects are present, use the Random Incidence Corrector with the microphone, and angle the microphone at approximately 70 degrees. Most personal noise dosimetry applications do not require the random incidence corrector, since they are not measured with a Class/Type 1 microphone.

Response Time

The response determines how quickly the unit responds to fluctuating noise. Fast has a time constant of 125 milliseconds. Slow has a time constant of 1 second. Example: Typically, noise is not constant. If you were to try to read the sound level without a response time, the readings would fluctuate so much that determining the actual level would be extremely difficult. Using a response of slow or fast simply smooths the noise fluctuation and makes the sound level easier to work with. While the terms slow and fast have very specific meanings (time constraints), they work very much as you would expect. The fast response would result in a more fluctuating sound level reading than would the slow response. The OSHA regulations require the slow response.

RMS (Root Mean Square)

The RMS voltage of a signal is computed by squaring the instantaneous voltage, integrating over the desired time, and taking the square root. Simply put, the RMS values are the results from the dosimeter with the response time and weighting settings taken into account.

SEL/Lxe (Sound Exposure Level)

The sound exposure level averages the sampled sound over a one second period. Assuming the sampled run time to be greater than one second, SEL is the equivalent one-second noise that would be equal in energy to the noise that was sampled. SEL is typically measured using a 3 dB exchange rate without a threshold. SEL is not used by OSHA. Example: Suppose you wanted to measure in a location next to railroad tracks, which also happened to be in the takeoff path of an airport. A train passes by taking 10 minutes with an average sound level of 82 dB. A jet passes overhead taking 45 seconds with an average level of 96 dB. Which of these events results in more sound energy? You can answer the question by comparing their SEL readings, which compress each event into an equivalent one-second occurrence. SEL for the train = 109.7 dB, SEL for the jet = 112.5 dB.

Threshold

The threshold affects the Lavg, TWA, and Dose measurements. All sound below the threshold is considered nonexistent noise for the averaging and integrating functions. The threshold does not affect measurements in the sound level mode. OSHA uses two different thresholds. The original Occupational Noise Exposure Standard (1971) used a 90 dB threshold and called for engineering controls to reduce the noise levels if the eight-hour TWA was greater than 90 dB. The Hearing Conservation Amendment (1983) uses an 80 dB threshold and calls for a hearing conservation program to be put in place if the eight-hour TWA exceeds 85 dB (50% dose). The Hearing Conservation Amendment is the more stringent of the two rulings and is what most US industrial users are concerned with. Example: With an 80 dB threshold, suppose you placed a 79 dB calibrator on the unit for a period of time. Because all of the noise is below the threshold, there would be no average (you can think of it as an average of 0 dB). If the calibrator were 80 dB instead, then the average would be 80 dB. On histogram printouts, typically 1 minute (or other specified increment) averages are printed. Because real noise fluctuates, it is quite possible to have an average level below the threshold. This also applies for the overall Lavg.

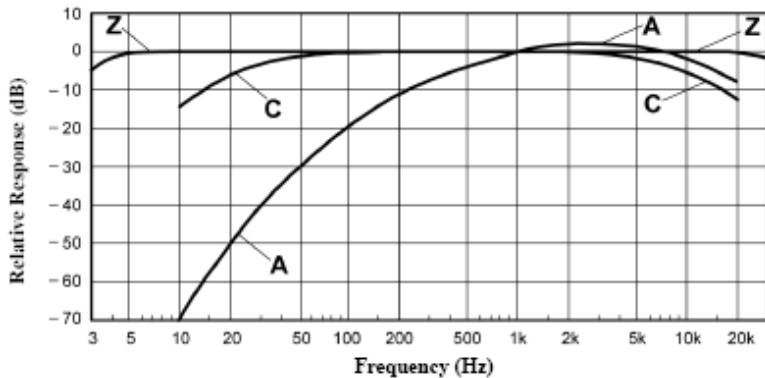
TWA (Time Weighted Average)

The time weighted average always averages the sampled sound over an 8-hour period. TWA starts at zero and grows. The TWA is less than the Lavg for a duration of less than eight hours, exactly equal to the Lavg at eight hours, and grows higher than Lavg after eight hours. TWA represents a constant sound level lasting eight hours that would result in the equivalent sound energy as the noise that was sampled. Example: Think of TWA as having a large 8-hour container that stores sound energy. If you run a dosimeter for 2 hours, your Lavg is the average level for those 2 hours - consider this a smaller 2-hour container filled with sound energy. For TWA, take the smaller 2-hour container and pour that energy into the larger 8-hour TWA container. The TWA level will be lower. Again, TWA is ALWAYS based on the 8-hour container. When measuring using OSHA's guidelines, TWA is the proper number to report provided that the full work shift was measured. Example: If the work shift is 6.5 hours long, then measure for the entire 6.5 hours. TWA is the correct level to report to OSHA. It does not have to be modified.

Weighting (A, C, Z, etc.)

“A”, “B”, “C”, “Z” and LINEAR are the standard weighting networks available. These are frequency filters that cover the frequency range of human hearing (20 Hz to 20 kHz). “A” weighting is the most commonly used filter in both industrial noise applications (OSHA) and community noise regulations. “A” weighted measurements are often reported as dBA. The “A” weighted filter attempts to make the dosimeter respond closer to the way the human ear hears. It attenuates the frequencies below several hundred hertz as well as the high frequencies above six thousand hertz. “B” weighting is similar to “A” weighting but with less attenuation. The “B” weighting is very seldom, if ever, used. The “C” weighting provides a fairly flat frequency response with only slight attenuation of the very high and very low frequencies. “C” weighting is intended to represent how the ear perceives sound at high decibel levels and is often used as a “flat” response when LINEAR is not available. “C” weighted measurements are often reported as dBC. “Z” is zero weighting, with no weighting across the frequency range of human hearing.

LINEAR is thought of as having a flat frequency response curve over the entire measurement frequency range. LINEAR is most commonly found on upper model sound level meters and is typically used when performing octave band filter analysis.



Upper Limit (UL)

A type of measurement parameter setting in which the user selects a certain decibel level. The dosimeter will then record the amount of time that the sound level was at or greater than the preset level. This time is then recorded as “UL Time”

Windscreen

A windscreen is a covering for the microphone that reduces disturbances caused by wind and direct contact with other surfaces. The windscreen is placed over the microphone when taking measurements to help prevent false high readings due to wind blowing across the microphone or objects (hair, clothing, etc.) brushing against the microphone. The windscreen will also help protect the microphone from dust and debris.

C: Measurement Equations

$$DOSE = \frac{100}{TC} \left[\int_0^{RTIME} 2^{(LS-CL)/(ER)} dt \right] \%$$

$$PrD_{8\text{ hours}} = DOSE \times \frac{TC}{RTIME} \%$$

$$PrD_{x\text{ hours}} = DOSE \times \frac{Prt}{RTIME} \%$$

$$L_{AVG} = ER \left[\log_2 \int_0^{RTIME} 2^{LS/ER} dt - \log_2 (RTIME) \right] dB$$

$$L_{EQ} = 3.01 \left[\log_2 \int_0^{RTIME} 2^{LS/3.01} dt - \log_2 (RTIME) \right] dB$$

$$SEL = ER \left[\log_2 \int_0^{RTIME} 2^{LS/ER} dt \right] dB$$

$$TWA = ER \left[\log_2 \int_0^{RTIME} 2^{LS/ER} dt - \log_2 (TC) \right] dB$$

$$TWA_{x \text{ hours}} = L_{AVG} + ER \left[\log_2 \left(\frac{Prt}{TC} \right) \right] dB$$

$$EXP_{HRS} = [2^{(L_{EQ} - 94)/3.01}] \frac{RTIME}{3600} Pa^2H$$

$$LHIST = ER \left[\log_2 \int_0^{HTIME} 2^{LS/ER} dt - \log_2 (HTIME) \right] dB$$

$$TIME \text{ STAT } DIST = 100 \times \frac{SC}{TS} \%$$

Variables used in equations

Variables	Explanations
LS	Sound level, in decibels, that exceeds the Threshold Level. The response time is indicated by the second letter (Slow or Fast).
TC	8 Hour Criterion Time (28800 seconds).
RTIME	Run Time (seconds).
ER	Exchange Rate (3, 4, 5 or 6 dB).
CL	Criterion Level (40 to 140 dB).
LHIST	Integrated level stored either in 1 second, 10 second, or 1 minute periods based on the programmed logging setup.
HTIME	Time used to compute Time History (1 second, 10 seconds, or 1 minute).
SC	Sample Counts. The number of samples occurring at the same decibel level.
TS	Total Samples. The total number of samples during the Run Time.
Prt	Projection Time (seconds).

INDEX

A

Attaching
the Edge 36

B

Background Noise, effects of
Defined 63
Battery
Checking 37
Battery charge status 42
Battery indicator icon 37

C

c-a
defined 64
c-a measurement
Setting up 26
Calibrate your meter 38
Calibration
Defined 66
Charging
Battery 11
Combining Noise sources
Defined 64
Communicating
Edge Dock 11
Crest Factor
Defined 65
Criterion Level (CL)
Defined 65
Criterion Time
Defined 65

D

Decibel (dB)
Defined 65
Docking station 22
Components 12
Dose
Defined 65
Doubling Rate
Defined 66
Download 22

E

Edge
Positioning 36

Edge Dock
New hardware wizard 23
EdgeDock1 45
EdgeDock1 and EdgeDock5 22
eg4 6
eg5
Memory storage 21
model explained 6
Exchange Rate
Defined 66
Export data 22

F–G

Free field setting (microphone)
Defined 66

H–I–J–K

Hearing Conservation
Defined 66
Heartbeat 27
Hertz
Defined 66

L

Lavg
Defined 67
LED indicator
Flashing amber light 9
Flashing green light 9
Lep,d
Defined 67
Leq
Defined 67
Lmin
Defined 67
Loading your studies 45
Locking 43
About 42
Logging 58
Defined 67

M

Maximum Level
Defined 67
Measurement Range
Defined 67
Memory storage symbol 21
Mount the docking station 15

N

Noise Floor
 Defined 67

O

Options menu 39, 40
 Overload 42

P

packing instructions 54
 Peak Level
 Defined 68
 PEL
 Defined 68
 Power
 Turn off 9
 Turn on 8
 Projected Time
 Defined 68

Q

QSP-II
 Heartbeat enabled 27
 Threshold enabled 27

R

Random incidence (microphone)
 Defined 68
 Reset 39
 Reset the meter 39
 Response Time
 Defined 68
 Retrieve data 22
 returning for service 54
 RMS
 Defined 68
 Run indicator 41

Running a study
 Overview 35

S

Securing run mode 43
 SEL
 Defined 69
 Sound pressure 3
 Splash screen 8
 Standards 3
 Stop mode 42
 Symbol
 Battery power clock 21
 Calendar 21
 memory storage 21

T

Threshold
 Defined 69
 Threshold enabled 27
 TWA
 Defined 69

U

unlock mode 43
 Unlocking 43
 Upper Limit (UL) 70
 USB cable 22, 45

V

Views 19

W-X-Y-Z

Weighting (A, C, Z, etc.)
 Defined 70
 Windscreen
 Defined 70



www.siafa.com.ar
ventas@siafa.com.ar

011 4684 2232



TSI Incorporated – Visit our website www.tsi.com for more information.

USA Tel: +1 800 874 2811
UK Tel: +44 149 4 459200
France Tel: +33 1 41 19 21 99
Germany Tel: +49 241 523030

India Tel: +91 80 67877200
China Tel: +86 10 8219 7688
Singapore Tel: +65 6595 6388

